

PPS



Premier Petroleum Supplier Catalogue || 2020 || Issue 8 || Commissioning Services



Contents

04

About the company

who we are ... our vision & our mission

06

PreCommissioning

PPS will provide a wide range of services

07

Commissioning Services

The services provided under the procedural commissioning.

11

Commissioning services Deliverables

12

Direct Benefits of Proper Commissioning

13

Building Commissioning

What you get, When a building is properly commissioned.

14

Completion Management Services

Computerized Completions Management Software (CCMS)

HOW TO GET IN TOUCH

Port Said Office:

Government Employees Buildings,
Building No.7, Office No.04
Port Fouad City-42523,
Port Said Gocernorate.

Cairo Office:

118 Marwa Building,
Office No. 21
Al Fustat City, Old Egypt -
17611,Cairo, Egypt

Mail:

P.O. Box: 1339, Nine Street,
El Maadi - 11728,
Cairo, Egypt.

Phone | +202-21076727
Fax | +202-21076679
Email: info@premps.com
www.premps.com

About the Company

Who we are...

Premier Petroleum Supplier was founded in Port Said, Egypt, in 2018. Since its establishment, Premier Petroleum Supplier has provided engineering consultancy services to Oil and Gas Industry, from concept selection, detailed designs, implementation and evaluation with our teams are qualified, innovative, creative, updated technology, solid and hands-on experienced nationally and internationally.

- Onshore, Offshore, Naval & Subsea
- Engineering
- Commissioning

Premier Petroleum Supplier provide products with highest quality to supply of advanced specification products of valve, pipe, flange, fitting and related accessories on Oil & Gas.

Premier Petroleum Supplier provides customized in-house training, instructed in English, Arabic, or a combination of both by a professional instructor, which specializes with hands-on experience in the field, with the best practices in hand.

Premier Petroleum Supplier Company (PPS), registered in:

EGPC under (#82 - 2019) & (#54 - 21/5/2020)

EGAS under (#2474 - 2019)

VISION

To be a major supplier of valves, pipes, flange and fitting-related accessories in the Oil and Gas field around the world. We also strive to provide engineering consulting and commissioning services with the best practices in hand.

MISSION

We strive to provide products with high quality to our customers in a competitive price and timely manner, driven continuous improvement with innovation and technology. We provide engineering consultancy, full range commissioning services and training to staff members in order to support the company goal

٢٠١٩/١١/٨٧

المادة/ شركة بريمير بتروليم سبيلير
تحتية طبيعية وبعيد،،،

بأية إلى طلبكم بخصوص تسجيل شركتكم الموافقة بسجل الموردين/المقاولين بالشركة المصرية القابضة للغازات
الطبيعية (إيجاس)، نحيطكم علماً بأنه تمت الموافقة على التسجيل تحت رقم (٢٤٧٤٧) بتاريخ ٢٦/١٠/٢٠١٩ في
النشئة الآتية:

• التفتيش الدولي والاستشارات.	• لملحقات و لوازم مواسير الصلب.
• إشارات مدنية (جميع الأعمال المنجزة).	• بلاتشات.
• تدريب مهندسين وصالة فنية.	• وصلات مواسير صلب أقطار صغيرة.
• ضوابط هواء.	• مواسير صلب أقطار صغيرة.
• الضوابط التريديج.	• بروك ربط لاصقة.
• أعمال تنمية واستشارات.	• وصلات مواسير أقطار كبيرة.
• خدمات الأشغال والتوريدات التوريلية والبحرية.	• فلاشات إستشاليس سكيل.
• إشارات الأعمال الهندسية المتكاملة.	• نظام التورف لحماية الخطوط من الضغط العالي.
• إشارات أعمال هندسية ميكانيكية.	• ضوابط الغاز.
• الاستشارات والدراسات الهندسية الخاصة بالسلامة والصحة المهنية.	• إشارات وتصميمات هندسية لمحطات الغاز.
• تصنيع معدات الحفر والحكم في الضغط.	• أعمال خطوط أنابيب بحرية.
• التدريب بلواعة (فني - إداري - تخصصي - حاسب آلي - أمن صناعي).	• الاستشارات الهندسية للأعمال والخدمات البحرية.

يشترط الالتزام بالشروط والمواصفات الفنية للمناسبات المطروحة واعتمادها من الشركات التي تقوم بطرح
طابقاً للتوصيات اللجنة في هذا الشأن ويرجى مراعاة تجديد القيد بسجل الموردين/المقاولين بالشركة المصرية
القابضة للغازات الطبيعية بعد أربعة أعوام من تاريخ التسجيل أعلاه.

وتفضلوا بقبول وافر التحية،،،

نائب رئيس الشركة للتخطيط ومشروعات الغاز
مهندس / مصطفى حلال

www.egpc.com.eg
www.egas.com.eg

Why Premier Petroleum Supplier ...



Our highly qualified team equipped with innovative, creative, updated technology and experienced engineers in consultancy services



Customize and develop in-house training with professional instructors hands-on experience in field and best practice



High quality products with competitive price to build long-lasting trusting relationships with our clients by upholding the highest standards



With more than **250,000 man-hours** invested in commissioning and precommissioning services, our crew of engineers and expert technicians developed the ability to work with speed, efficiency, and agility while maintaining exceptional quality of the work done. Be it reviewing and auditing (punch listing) construction works, executing precommissioning tasks, spotting technical and engineering issues or managing the changes on the project, our crew is definitely an added value to the project execution.

Commissioning is defined as the act of bringing a newly constructed equipment, or plant, into service. We, at premier petroleum services, have perfected the science and art of commissioning, via bringing aboard the elite commissioning staff who brought large-scale projects to service since 2005.

We, at **PPS**, provide two types of commissioning, conventional/traditional commissioning and procedural commissioning. Both types can be applied to process plants commissioning and building commissioning.

Each has its own nature that fit with the needs of our valued customers. That said, we, at Premier Petroleum Services, prefer the procedural method for commissioning plants.

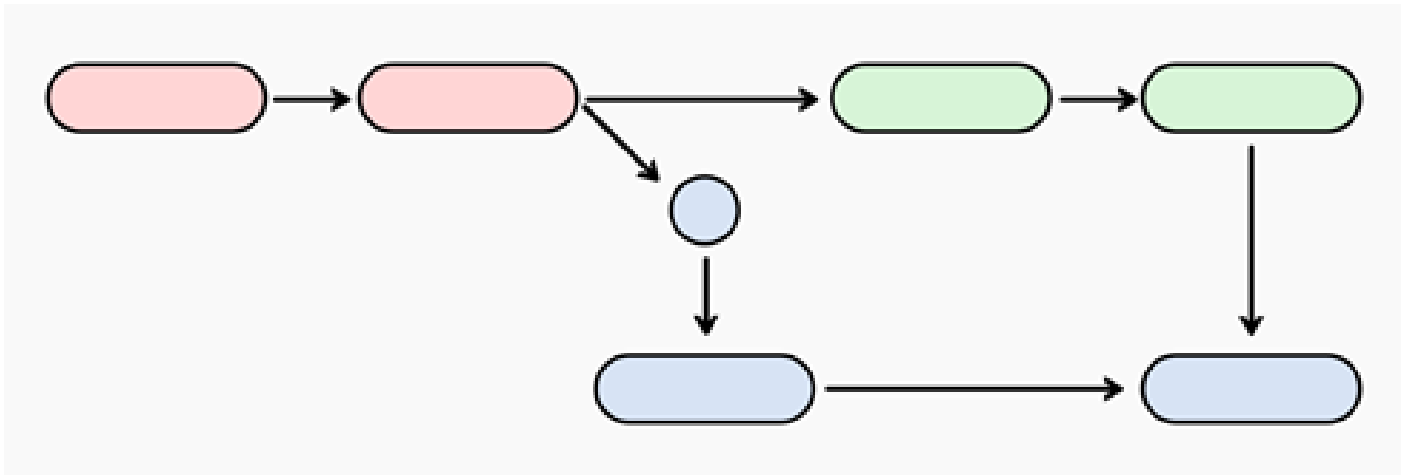
In addition to commissioning services, **PPS** provide professional precommissioning services.

Precommissioning Services

In precommissioning, **PPS** will provide a wide range of services, ranging from conformity checks, paperwork handling, punch listing and verification, raising site and technical queries and work them through resolution with the proper authority, In addition to actual cold-testing on site, to ensure safe and proper introduction to energy, and readiness for hot or energized testing.

Supported by our state-of-the-art completion management system, **PPS** guarantees an accurate and smooth handover process from construction to commissioning, with the highest quality measures.

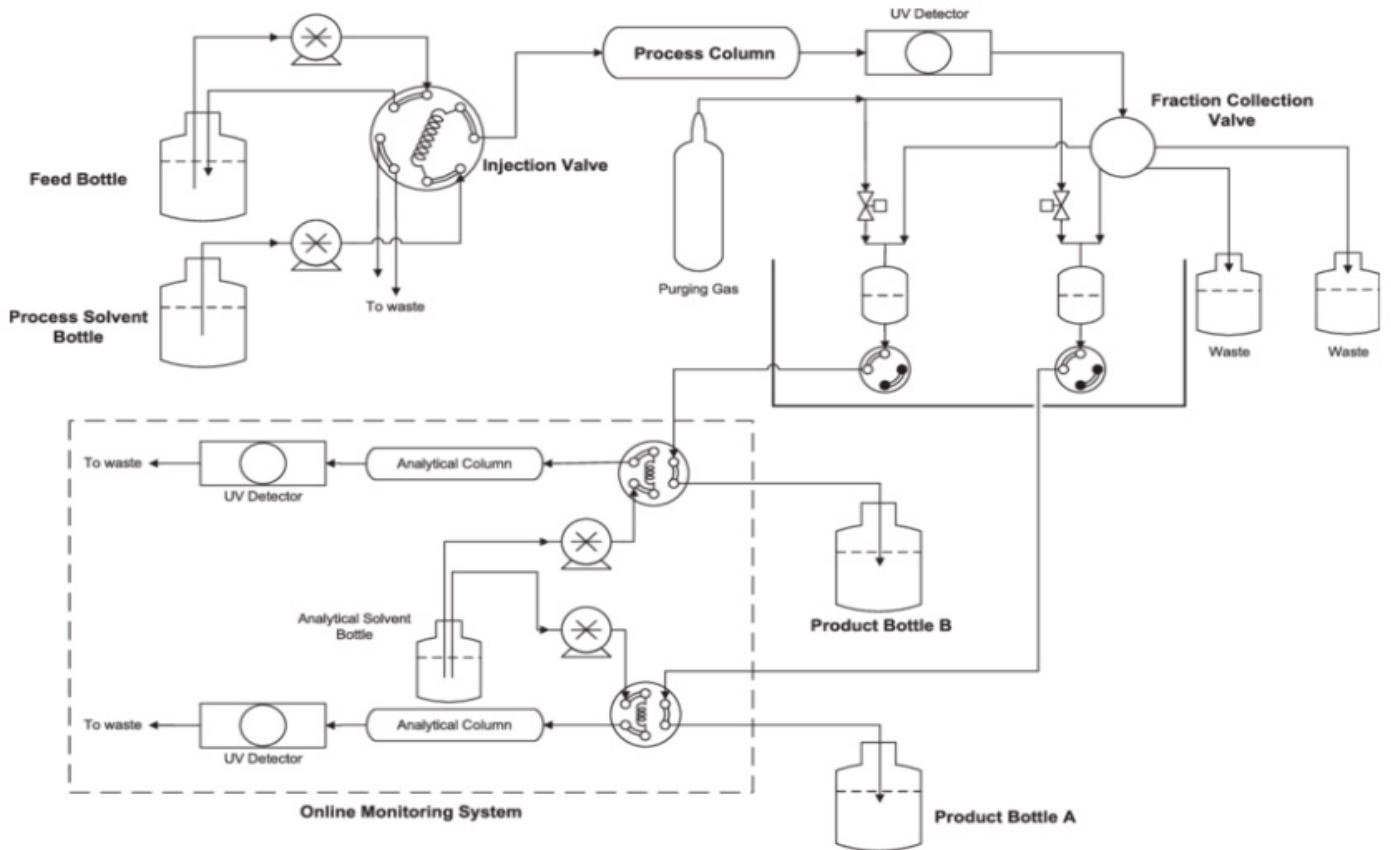
Commissioning Services



Procedural commissioning is the most thorough method to ensure every bit of your plant has been tended to. With well-established and proven inspection and testing procedures for each type of the project equipment, supported by a **robust database** of each element of the project equipment and devices, based and built on the detailed engineering documents.

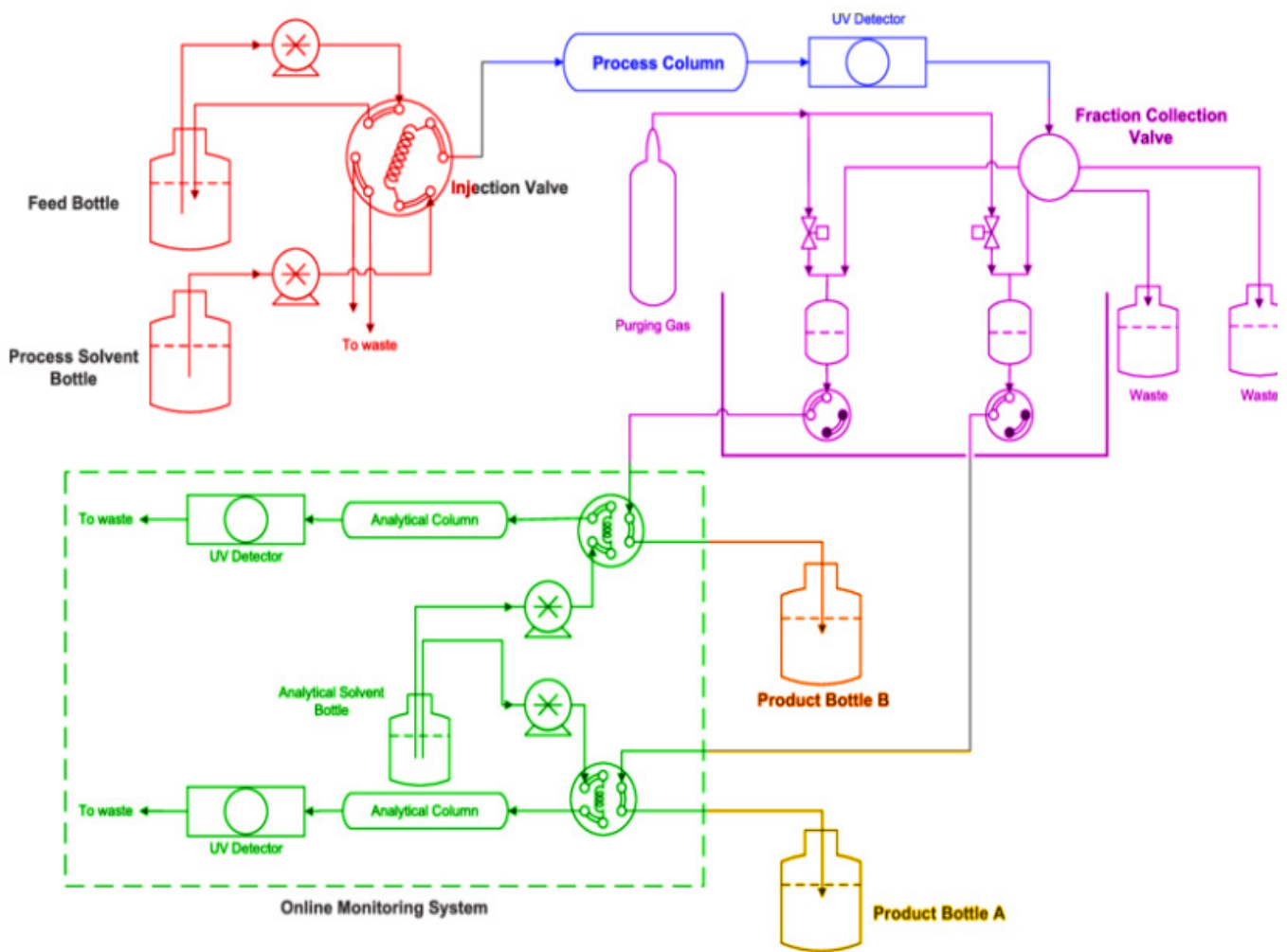
The services provided under procedural commissioning include the 10 key elements of successful commissioning:

1. Review and update of project HSE plan,
2. Review of project Risk Register,
3. Planning the commissioning process,
4. Managing the Mechanical Completion,
5. Precommissioning of systems, components and/or equipment,
6. Commissioning,
7. Pre-Startup Safety Review (PSSR),
8. Start-Up,
9. Performance test,
10. Project handover and closure.



The project is divided into multiple functional systems to facilitate the handover from construction to commissioning to startup, and finally to the plant operations. Each of the project systems shall have their own integrated commissioning procedure, to go along with the standardized procedures for each of the equipment.

We believe that the commissioning phase, including both static and dynamic commissioning is the ultimate risk mitigation for the following stage: START-UP.



Despite being oriented towards procedural commissioning, **PPS** also carries out conventional/traditional commissioning, with full function checking of plant instrumentations and devices, leak testing the plant's systems, and then moving on to the startup and trial operations of the facility.

Moreover, our commissioning crew bring to the project both the projects experience and the maintenance experience, providing comprehensive eye for punch listing in areas such as accessibility and maintainability. Two areas that most commissioning teams overlook.



Commissioning Services

DELIVERABLES OF COMMISSIONING SERVICES

While we adhere to any client requirements, the deliverables expected from any commissioning service provider include:

- Set of Limits of System Handover (LOSH),
- Management of Change (MoC) registers, including:
 - > Set of approved red-lined drawings, reflecting changes made during construction.
 - > Set of green-lined drawings, reflecting change made during commissioning.
 - > Technical and engineering queries register.
- Commissioning plan and generic commissioning procedures.
- System-specific commissioning procedures.
- Inspection and testing plan.
- Comprehensive punch list per system.
- Check sheets listing all activities done and their results.
- Handover dossiers, per system, covering all the related engineering documents check sheets, MoC documents, manuals, datasheets, punch lists and ITS's.



DIRECT BENEFITS OF PROPER COMMISSIONING

It has been proven that with proper commissioning, an industrial facility will:

- Operate at lower cost and energy consumption,
- Have less corrective maintenance needs – as some studies estimate 40% less maintenance cost in the first 10 years of the facility lifetime,
- Have less change orders,
- Have near-zero deficiencies resulting from faulty construction,
- Have a managed and well-documented startup process,
- Have smoother turnover,

BUILDING COMMISSIONING

With the same concept adapted in the oil and gas field, **PPS** provide the commissioning services for building. It is quite a new application, but it has proven to be very beneficial. When a building is properly commissioned, you get:

- Lower energy and operational costs,
- Reduction of change orders and claims,
- Fewer deficiencies inherited from construction phase,
- Proper documentation eases building the data for the Building Management System,
- Better construction quality and faster project completion time,

According to the landmark 2009 study from Evan Mills at the Lawrence Berkley National Laboratory, the payback time for commissioning costs ranges between 1.1 years and 2.4 years, for existing and newly constructed buildings, respectively.

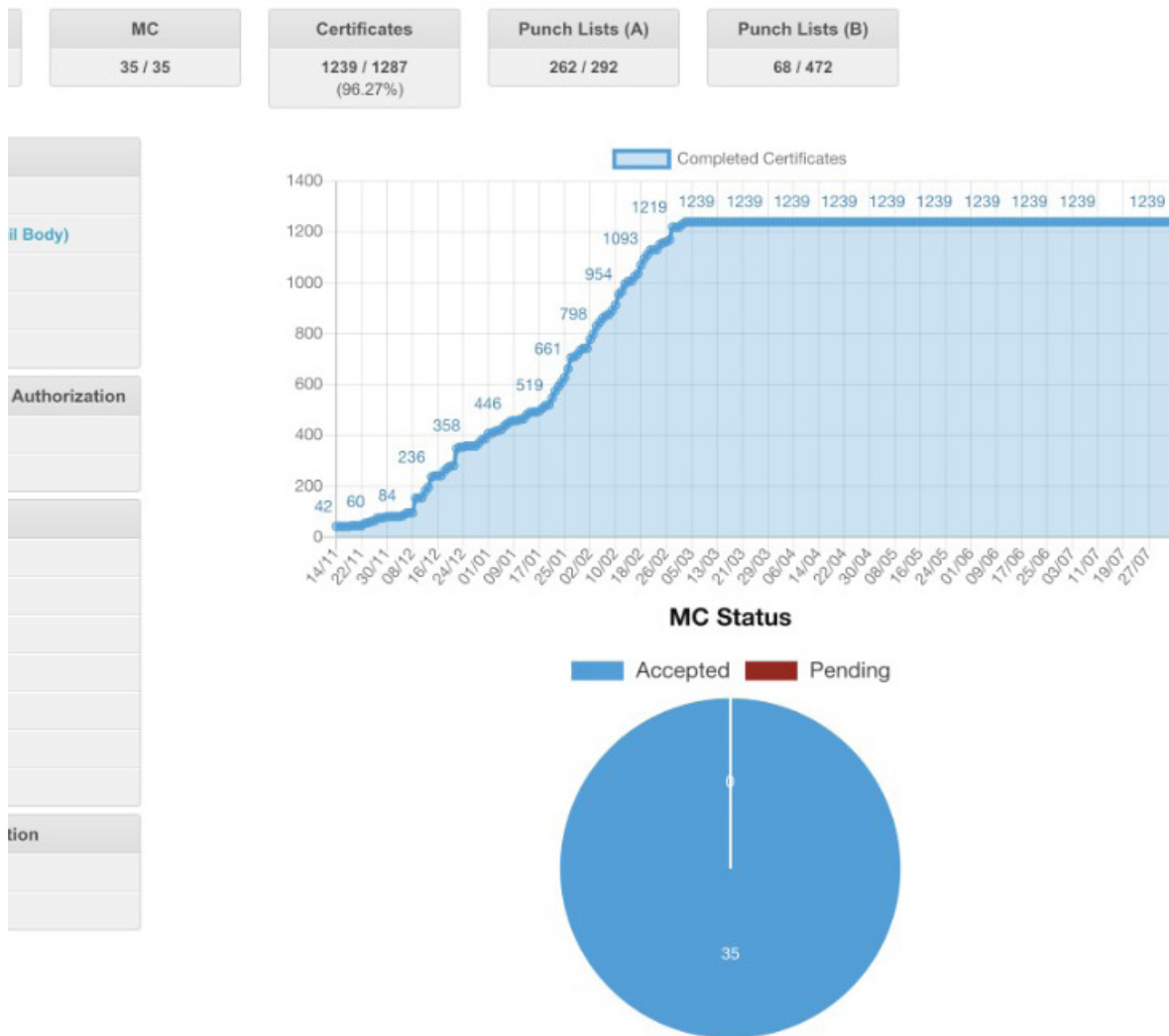


Completion Management Services

To support the project commissioning and turn-over process, a **Computerized Completions Management Software (CCMS)** is usually utilized.

We, at **PPS**, take pride in having our own in-house developed Computerized Completions Management System, which provide a wide spectrum of featured, including:

- Comprehensive and clear built-in reporting, in real-time,
- Easy to understand and manage user interfaces,
- Centralized data servers in **PPS** premises and cloud storage, or localized database servers on site, with local backups,
- Flexible structure to accommodate project's workflow, if the customer requires different workflow than PPS's standard completions workflow.



- Adaptable to any project size, specifications and/or forms.
- Ability to export the data into many different formats, including major computerized maintenance management software, to facilitate smooth transition of data to maintenance teams.
- Fully customizable reports and dashboards.
- Web based, hence can run on any operating system and/or computers, tablets or phones.
- Extensive user privileges setup, for advanced security and access control features.
- On request, the system can be run on **PPS's** own servers to enable project management team access to the status and progress reports from anywhere in the world, with the advanced access control measures.

Along with the Computerized Completions Management System, **PPS's** own completions engineers have the experience to manage the project's flow, and provide seamless support to all project's parties.



Contacting Information

Contact us for more information or to discuss your needs of valves, pipes, fittings and/or flanges, or to enquiry our engineering consultant, commissioning services, training courses, seminars and customized in-house training services.

PREMIER PETROLEUM SUPPLIER.

Port Said Office: 7 Government Employees Building, Office No. 04, Port Fouad - 42523, Port Said, Egypt.

Cairo Office: 118 Marwa Building, 2nd Division Office No. 21, Al Fustat City, Old Egypt - 17611, Cairo, Egypt.

Working Hours: Sunday - Thursday, 9:00AM to 5:00PM

Mail: P.O. Box: 1339, Nine Street, El Maadi - 11728, Cairo, Egypt.

Phone | +202-21076727

Fax | +202-21076679

Email: info@premps.com

www.premps.com

www.prempSCO.com

