

PPS



Premier Petroleum Supplier Catalogue || 2020 || Issue 5|| Procurement Services



Table of Contents

04	About The Company Who we are, Our Vision, Our Mission
06	Suppliers PPS has served and worked with many organizations all over the world to increase our options.
11	Third Party Partners To offers our certification services under their accreditations and provide unique services with full of trust, confidence, integrity and international credibility to customers. 67 BUREAU VERITAS 67 LOC Group Co. 67 TUV NORD
12	Products PPS Will provide you with the best product that meets your need in perfect timing and best cost.
102	Contact Us PPS Contacting information and addresses.

Products

12	ClampOn (Ultrasonic intelligent sensors)
Compressor Equipment	20
22	Distributed Control Systems
Filters & Filtration System	26
30	Fire and Gas Detectors
Fittings	36
38	Flanges
Flow Indicator	42
46	Level Gauges
Level Indicator	50
54	Hoses
Pumps	60
64	Solid Control Equipment
Steel Pipe & Tube Production	70
92	Storage Tanks
Tube Industry	96
100	Turbine Parts
Valves	102
118	Well Head Control Equipment
Other	166

About the Company

Who we are...

Premier Petroleum Supplier was founded in Port Said, Egypt, in 2018. Since its establishment, Premier Petroleum Supplier has provided engineering consultancy services to Oil and Gas Industry, from concept selection, detailed designs, implementation and evaluation with our teams are qualified, innovative, creative, updated technology, solid and hands-on experienced nationally and internationally.

- Onshore, Offshore, Naval & Subsea
- Engineering
- Commissioning

Premier Petroleum Supplier provide products with highest quality to supply of advanced specification products of valve, pipe, flange, fitting and related accessories on Oil & Gas.

Premier Petroleum Supplier provides customized in-house training, instructed in English, Arabic, or a combination of both by a professional instructor, which specializes with hands-on experience in the field, with the best practices in hand.

Premier Petroleum Supplier Company (PPS), registered in:
EGPC under (#82 - 2019) & (#54 - 21/5/2020)
EGAS under (#2474 - 2019)

VISION

To be a major supplier of valves, pipes, flange and fitting-related accessories in the Oil and Gas field around the world. We also strive to provide engineering consulting and commissioning services with the best practices in hand.

MISSION

We strive to provide products with high quality to our customers in a competitive price and timely manner, driven continuous improvement with innovation and technology. We provide engineering consultancy, full range commissioning services and training to staff members in order to support the company goal



Why Premier Petroleum Supplier ...



Our highly qualified team equipped with innovative, creative, updated technology and experienced engineers in consultancy services



Customize and develop in-house training with professional instructors hands-on experience in field and best practice



High quality products with competitive price to build long-lasting trusting relationships with our clients by upholding the highest standards

Suppliers

PARIMET GROUP LTD

Specializes in the production of pipeline accessories, fittings, constructional detachable connecting and repair clamps for offshore pipelines of all types and sizes, flanges, assemblies and parts for steam turbines of domestic and foreign making, compressor machines, it is an enterprise for the creation of large-capacity equipment, equipment for chemical, petrochemical, marine, oil and gas, fuel and energy complex of Ukraine, the CIS and the countries of the European Union.



CANADOIL GROUP

Canadoil group are an integrated manufacturer and supplier of customized pipes, fittings, products, and solutions to major industry players across the energy and environmental value chain. We manufacture a complete range of welded steel pipes, butt weld fittings, and pressure vessels. Our manufacturing platform allows us to retain full control of providing design and engineered solutions, spooling, and modularized piping systems.



TECNOVIDUE

A qualified supplier of Valves, Pipes and Fittings:

Valve, Pipe and Fitting Specialist

Tecnovidue is a well-known trading company for valves, pipes and fittings for Oil, Petrochemical, Chemical and Power industries, trusted by high profile customers since 1996. Our reliability is confirmed by various approvals and certifications for customers, making Tecnovidue as one of the most important suppliers for engineering companies in energy and chemical industries.

High Quality Materials

We source quality materials only from reliable suppliers who are qualified by international quality standards.

Technical Support from Experts

When technical guidance is required, we can offer technical support from our experts who have high experience in Oil & Gas industry.



Value & Piping Specialist

EMERSON



Emerson has boldly transformed itself to create value for their customers and shareholders. their newly energized focus on our two core business platforms — Automation Solutions and Commercial & Residential Solutions — they can confront the challenges of an increasingly complex and unpredictable marketplace from a position of strength. This allows them to drive both near- and long-term value. And retain their single-trusted-partner status with the process, industrial, commercial and residential industries.

Emerson was founded in 1890 in St. Louis, Missouri, as a manufacturer of electric motors and fans. Over the past 100-plus years, we have grown from a regional manufacturer into a global technology solutions powerhouse.

HONEYWELL



Honeywell has been innovating for more than 100 years – and now they're creating what's next:

AEROSPACE

More fuel-efficient aircraft. More direct and on-time flights. Safer skies and airports. We're found on virtually every commercial, defense and space aircraft.

BUILDING TECHNOLOGIES

Over 100 years ago, we defined energy efficiency by making indoor comfort automatic. Today, we redefine it in 10 million buildings using our technology.

PERFORMANCE MATERIALS & TECHNOLOGIES

We pioneered automation control. So we understand complex industrial facilities, and how to create high-quality and high-performance chemicals and materials.

ABB



ABB is a technology leader that is driving the digital transformation of industries. With a history of innovation spanning more than 130 years, ABB has four customer-focused, globally leading businesses: Electrification, Industrial Automation, Motion, and Robotics & Discrete Automation, supported by the ABB Ability™ digital platform. ABB's Power Grids business will be divested to Hitachi in 2020. ABB operates in more than 100 countries with about 147,000 employees.

ABB is organized into many global businesses like:

- Electrification
- Robotics & Discrete Automation
- Power Grids

Suppliers (Cont....)

SCHNEIDER ELECTRIC



Schneider Electric Provide energy and automation digital solutions for efficiency and sustainability. we combine world-leading energy technologies, real-time automation, software, and services into integrated solutions for homes, buildings, data centers, infrastructure and industries. we make process and energy safe and reliable, efficient, and sustainable, open and connected.

Schneider Electric Technologies ensure that life is on everywhere, for everyone and at every moment.

Schneider Electric Having helped thousands of customers do more with less, we are proving the power of digitization in energy management and industrial automation.

CENGIN CRANE CO. LTD



CENGIN Crane CO., LTD. (Shanghai) is a leading Euro-style material handling equipment designer and manufacturer with over thirty-five years' history, specialized in designing, manufacturing, sales, installation and maintenance service. CENGIN has always been committed to explore the most updated, scientific and comprehensive material handling solutions to share with our customers.

Their unique Euro-style design feature originates from rich experience and innovation spirit of our engineers in many fields such as port construction, shipbuilding, precast yard, workshop & warehouse, marine works, bridge, road and railway construction, pipeline and power plant, etc.

WASSERTEK

Pioneer in water technology



WASSERTEK is a leading premium quality tools and machinery manufacturer having corporate offices in United Kingdom & all over Northern America. We are renowned worldwide for maintaining quality measures and are considered as a pioneer in water technology and related product line emphasizing on Plastic Pipe Welding Technology, Metal Pipe Bonding Technology and Hydro testing.

The Group headquarters is in Canada and currently have over 500 employees worldwide who are involved in design, research and presently produce and sell on an average 1 million quality tools and machinery every year.

Our factories have been certified worldwide in line with the latest international standards and are currently serving the needs of petroleum, gas, infrastructure & water related networks. Made by WASSERTEK itself ensures guarantee to our customers.

KES

Professional Manufacturer of Solid Control Equipments



KES Energy Equipment Manufacturing Hebei Co., Ltd. is headquartered in Dachang, Chaobaihe industrial zone, Langfang city, Hebei province, 28 kilometers away from Beijing capital airport and 165 kilometers from Tianjin Port, with a total floor area of 26,700 square meter, the registered capital of RMB 30 million and turnover more than RMB 80 million. KES is a leading manufacturer involving in the design, R&D, production, sales/after-sales services of mud solids control equipments and systems.

KES main products are shale shaker, drying shaker, mud cleaner, desander, desilter, decanter centrifuge, vertical cutting dryer, vacuum degasser, mud gas separator, flare ignition device, jet mud mixer, centrifugal pump, shear pump, screw pump, submersible pump, mud agitator, mud gun, mud tank, oil tank, water tank, camping and complete set of solids control systems etc.

JIANGSU HUAYING



Jiangsu huaying valve industry co., Ltd. is located in wuxi yangming high-tech industrial park, is a collection of research and development, production and sales of modern valve enterprises; The company produces HYV valves which are widely used in the fields of petroleum, chemical industry, papermaking, pharmacy, electric power, metallurgy, scientific research and urban construction. Our company has passed API certification, PED97/23 /EC certification, special equipment manufacturing license certification, classification society ISO9001 quality system certification and CCS product certification, and constantly updated equipment, the introduction of new technologies at home and abroad, the use of new technology, the development of new products and strengthen the strength of after-sales service, to expand the market share of products.

Jiangsu huaying valve industry co. main products are, ball valve, gate valve, globe valve, check valve, control valve, and other.

KUROTEC-KTS



KUROTEC-KTS is a leading manufacturer of GRP pipes, fittings, vessels, special constructions as well as GRP composite materials for the chemical industry and power plant construction since 1983. We are active worldwide in the industrial fiberglass and deliver innovative fiberglass and composite materials for your specific application area. The team of KUROTEC offers a comprehensive portfolio of integrated solutions.

The production of GRP pipes and vessels for corrosive media is the daily business of KUROTEC-KTS. The safe control of critical substances by responsible thinking and acting is the top priority of all our employees. Every order is monitored up to final acceptance by our quality assurance department. From the design, calculation, production, delivery and installation to after-sale service is an integrated organization. We are providing a 24 hour service, which is under the premise of customer benefits.

Suppliers (Cont....)

Gandhi Automations



Gandhi Automations specializes in designing, manufacturing and installing customised products conforming to the highest safety standards complemented with reliability and energy efficiency.

All products are designed and manufactured with European collaboration using innovative and creative engineering technology. The product development team uses the latest software combined with technologically advanced machinery to offer our customers an excellent engineered product. To ensure superior quality and operational efficiency the company has a state of the art manufacturing and warehouse facility of 300,000 sq ft.

We lay great emphasis on exceptional customer service and provide regular programmed inspections and maintenance safeguards which increases product lifetime and reduces operational cost. We have a huge team of committed and diligent engineers & technicians; many of them are trained at advance training centers in Europe for this purpose.

MESA Speciality Gasses & Equipment



Precise manufacturing of calibration gas mixtures involves many critical steps-consideration of chemical raw material purity as well as detailed impurity characterization; calculation of phase behavior for the calibration gas mixture; precise blending; and finally, independent confirming analysis of the final calibration gas mixture.

MESA Products:

- CALIBRATION GAS STANDARDS
- GAS HANDLING EQUIPMENT
- RARE GASES
- SERVICES

GEE

GEE, more than "made in china!"



Haihao is a modern private enterprise. The Group was established in 1982. They are located in Mengcun - the hometown of Chinese pipe fittings. They are the first enterprise and one of the biggest enterprises which produce both pipe fittings and steel pipes in China. The Group owns 6 subsidiaries, including **Hebei Gee Pipe Mill Co., Ltd.** Gee products have four series: 1, flange and forged fittings; 2, steelness seamless butt weld fittings with steel plates, such as elbows, tees, reducers and bends; 3, seamless steel pipes, ERW series, SSAW series; 4, nuclear project accessories.

Gee members regard the quality as our life. We stick to ISO9000 quality system and efficiently control the production procedure. We have set up a pipeline equipment inspection center", and we also have strong capabilities of chemical analysis, metallographic inspection, physical test and nondestructive inspection.

Third Party Partners

BV was Created in 1828, Bureau Veritas is a global leader in Testing, Inspection and Certification (TIC), delivering high quality services to help clients meet the growing challenges of quality, safety, environmental protection and social responsibility.

As a trusted partner, Bureau Veritas offers innovative



solutions that go beyond simple compliance with regulations and standards, reducing risk, improving performance and promoting sustainable development.

Bureau Veritas core values include integrity and ethics, impartial counsel and validation, customer focus and safety at work.

LOC Group, founded in 1979, is the premier international marine and engineering consulting firm consisting of LOC, Longitude, Innosea and JLA (John LeBourhis). Headquartered in London, the company operates over 30 offices located worldwide in Europe, Africa, Americas, Middle East, Asia and Australia. LOC operates in the shipping, oil & gas and renewables sectors, providing loss prevention (marine warranty, surveys, inspections & audits, technical due diligence),



loss management (marine casualties, claims, disputes and litigation) and marine and engineering consultancy services. Our clients comprise P&I clubs, H&M insurers, underwriters, brokers, oil and gas companies, energy utilities, field operators, developers, EPC contractors, installation contractors, drilling contractors, lawyers, shipowners, governments, and turbine and cable manufacturers.

TUV NORD EGYPT offers our certification services under their accreditations.

They provide unique services with full of trust, confidence, integrity and international credibility to customers, TÜV NORD EGYPT has a wide range of accreditation covering all the services delivered to their clients.

1-Membership at Lifting Equipment Engineers



Association (LEEAA) 2-Membership at the Grain and Feed Association (GAFTA) as a Superintendent and Surveyor Member.

4-Accredited from local Egyptian Accreditation (EGAC) as Inspection Body Type (A) in compliance with ISO 17020:2012 in the field of Mineral Commodities, Ullage Survey and Draft Survey.

Products

ClampOn *UltraSonic Intelligent Sensor*

A- Subsea

- Various Retrofit Solutions
- Subsea Corrosion-Erosion Monitor
- Subsea 3D Vibration Monitor
- Leak Monitor
- Subsea PIG Detector
- Subsea Particle Monitor

B- Top Side

- Condition Monitor
- Well Collision Detector
- Vibration Monitor
- Particle Monitor
- Corrosion-Erosion Monitor
- PIG Detector

C- Software

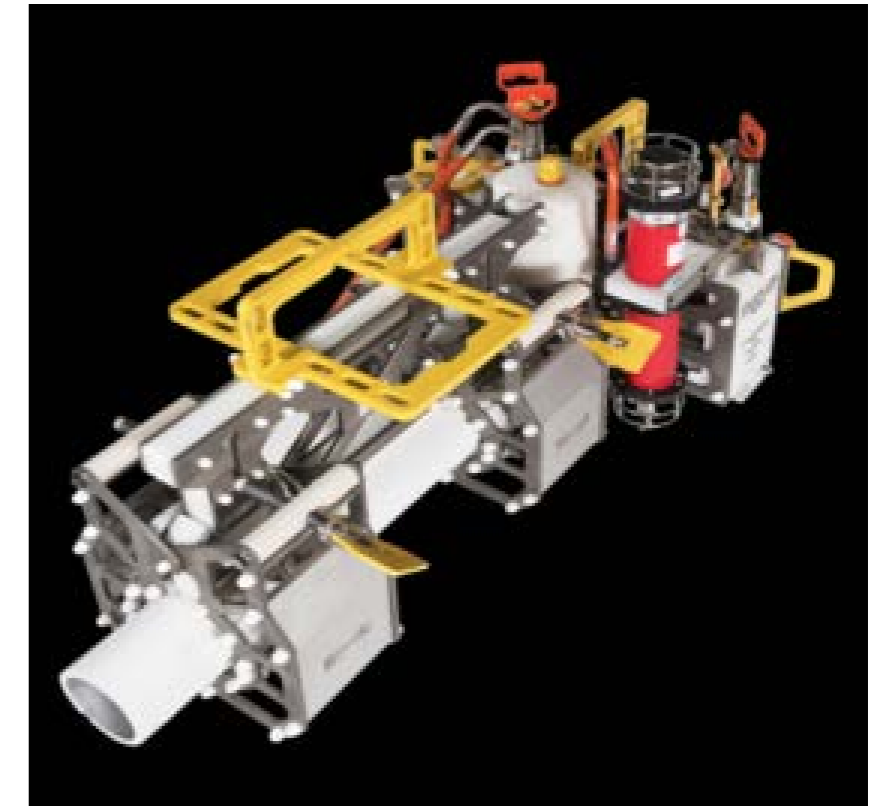
- CAN Monitor

A-Subsea Corrosion erosion monitor

Overview

The ClampOn DSP Subsea Corrosion-Erosion Monitor (CEM) continually monitors and quantifies changes in wall thickness over a large area of a pipeline. The instrument estimates the rate at which corrosion and/or erosion reduces the thickness of the pipe wall. In

this way, it can provide operators with an early warning of potentially catastrophic failures before they occur. The CEM is therefore also an effective tool in helping operators comply with newer regulations regarding the need for condition monitoring. It can be retrofitted to existing structures or installed on new pipelines before they are deployed subsea.



System Properties

- The system measures the wall thickness loss between pairs of transducers
- The system will have between two and thirtytwo transducers in operation
- The sensitivity for wall thickness assessment is around 0,1% of wall thickness (WT) over the full temperature range
- Can detect changes as small as 0,1% of wall thickness
- The system measures wall thickness in REAL time, at user-definable intervals

B- Subsea Particle monitor

Overview

Sand production in Oil and Gas wells is one of the most challenging factors an operator faces during production. Going subsea, safety issues in conjunction with the need to produce as much as possible per well, makes the selection of a subsea monitoring system even more important.

Principle of operation

The ClampOn DSP Subsea Particle Monitor is based on the ClampOn “Ultrasonic Intelligent Sensor” technology. The sensor is installed two pipe diameters after a bend, where the particles/solids impact the inside of the pipe wall, generating an ultrasonic pulse.

The ultrasonic signal is transmitted through the pipe wall and picked up by the acoustic subsea sensor. In the patented “Intelligent” ClampOn

sensor the signal is processed internally by a DSP engine and filtered before being sent digitally and/or analogically to the topside computer or control system (no Calculating Interface Unit required). Here the user can monitor and evaluate the data in real time and make the required decisions for profitable production.



C-Leak Monitor

Overview

The ClampOn DSP Leak Monitor detects small and medium leaks or flow-throughs, even with low differential pressure over the measuring point on pipes and valves. The ClampOn DSP Leak Monitor has been developed with the aim of offering a product that can quantify a leak through a closed valve. The ClampOn DSP Leak Monitor is qualified as a subsea and topside monitor.

Advantages

A leak in an oil or gas flow line is a highly dangerous situation – upstream as well as downstream, so it is extremely important for the operator to be warned about any leak immediately should it occur.

A leak in a flow line, valve, flange or any other component can compromise safety and may also lead to a shutdown at the production stage or down-stream at a refinery or terminal.

A product leak normally has a very low flow-rate, which is determined by the size of the defect, the properties of the fluid and the pressure differential. There are a number of advantages in using the DSP Leak Monitor to monitor valves:

- Reduced loss to flare
- Gas leak to the sea
- Reduced loss to the atmosphere
- Reduced process loss
- Maintenance planning.

The ClampOn DSP Leak Monitor helps operators identify and quantify sources of gas/liquid leakages, thus enabling them to take appropriate action. Customers have successfully used the ClampOn Leak Monitor to identify cross-flow in valves connected to the manifold.



D- Well Collosion Detector

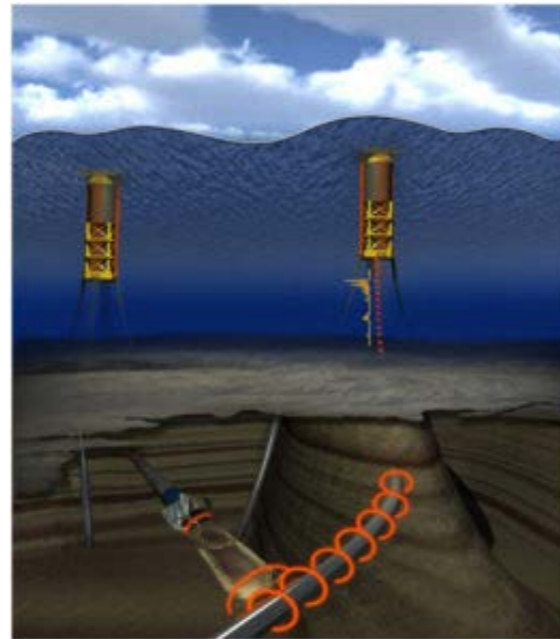
Overview

The ClampOn DSP Well Collision Detector is designed to prevent collisions involving directional drilling within the proximity of existing wells. ClampOn DSP Well Collision Detectors provide operators with real time data so that collision risk analysis calculations are not the only factor determining the bit's proximity to existing wells.

This method uses ClampOn noninvasive ultrasonic sensor technology in the form of a spectrum analyzer. The spectrum analyzer digitizes the ultrasound allowing frequency analysis in realtime.

How it works

The process involves ClampOn DSP Well Collision Detectors being installed topside on all existing wells in close proximity to the well being drilled. The drill string's approach to existing wells will create an increase in the ultrasonic signal being observed topside. When dramatic ultrasonic increases are observed, drilling



will be halted and data analyzed. After analysis is complete, the drill string can be diverted or drilling can resume with the confidence that a collision has been avoided or that initial calculations were confirmed.

Proper collision avoidance techniques should be considered when preparing for the drilling operations. The ClampOn DSP Well Collision Detector provides the operator with an advanced real time collision monitoring system with minimal equipment and personnel requirements.



E-Vibration Monitor

Overview

Vibrations always start at very high frequencies and change to lower frequencies as the condition develops. The ClampOn DSP Vibration Monitor is an ideal instrument to monitor vibrations in 3D on structures and pipelines. The system is designed with a broadband frequency response from 0,125 Hz to 262 kHz, suitable for early detection of vibrations in objects such as:

- Flow lines, jumpers
- Pumps, rotary machinery
- Slugs etc.

How It Works

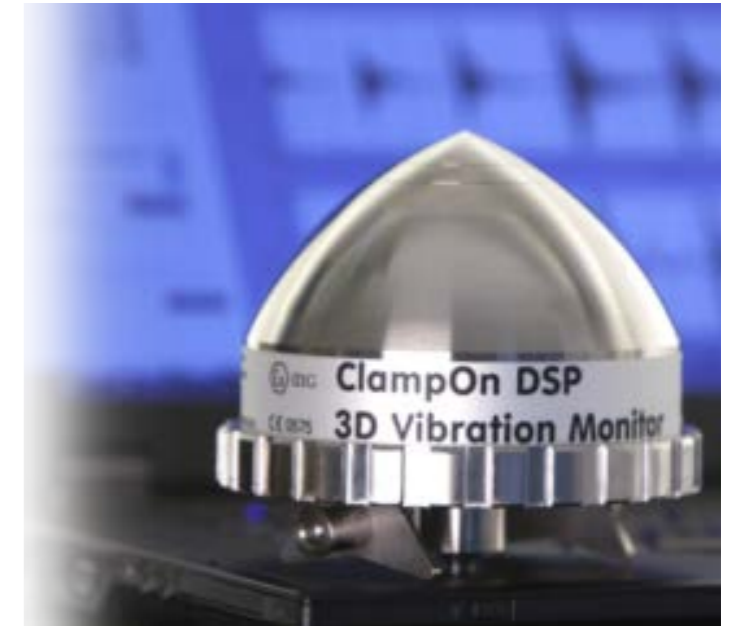
The vibrations are monitored by utilizing two different measurement principles in combination.

Early warning, shear waves propagating from metal friction are picked up by an ultrasonic element. These measurements will give an indication of potential fault conditions as all those starts high up in frequency.

3D Vibrations from 0.125Hz to 1000Hz will be quantified by an accelerometer. To optimize both metering schemes, the Vibration Monitor 3D needs good mechanical and acoustic coupling to the structure it's monitoring. The ClampOn DSP Vibration Monitor 3D can also function as a regular sand detector, in parallel with the vibration monitoring, and in real time.

Integration

The system is set up to present measurements as an FFT where the amplitude represents acceleration. Each frequency bin will contain the maximum and average from all axis – X, Y and Z. Measurements done by the ultrasonic element will only have max and average values. All outputs have been calibrated in order to provide the correct frequency and acceleration response



F- Corrosion Erosion Monitor

Overview

The patented ClampOn DSP Corrosion-Erosion Monitor (CEM) has been designed to monitor the average wall thickness of pipes, containers and any large object that requires corrosion/erosion monitoring. The ClampOn CEM system utilizes a unique method of monitoring wall thickness loss by the use of clamp-on sensors. A number of transducers measure corrosion-erosion by transmitting ultrasonic signals that propagate through

pipe material. Using ClampOn acoustic transducers means that no drilling or welding that would cause loss of production is required.

How it works

The ClampOn Topside CEM is an ultrasonic instrument designed to measure wall thickness loss in pipes over a defined area. It uses active ultrasound and exploits the properties of Acoustic Guided Lamb Waves to detect the changes in wall thickness relative to reference values obtained during the installation of the system. Changes to



wall thickness is detected by a grid of signal paths, generated by up to 32 transducers.

The permanently installed CEM system ensures that measurements are repeated frequently and in exactly the same manner, thereby eliminating the weaknesses of manual ultrasonic thickness gauging. Wall thickness trends are generated automatically and can be observed in real time.



G-PIG Detector

Overview

The ClampOn DSP PIG Detector controls and monitors when the PIG is passing the point of installation. Providing reliable information about the passage of the PIG increases pipeline integrity and produces cost savings.

How It Works

ClampOn PIG detection systems perform this operation in a simple and safe way as they only monitor the PIG from the outside of the pipe. The sensor is simply clamped onto the pipe, eliminating any need for welding or drilling during installation. There is no need for inserts in the PIG and the system is capable of detecting all types of PIGs or plugs.



Advantages

The ClampOn DSP PIG Detector, available in topside and subsea versions, is a more compact and user-friendly unit than other instruments on the market. It is easier to install in the field and easier to move to other locations. PIG Detector Topside

DSP involves complete digitalization of the system and the elimination of analogue filters. This technology is increasingly used in a wide range of "smart electronic devices" as it provides sufficient capacity to perform advanced signal-processing tasks in real time.



Products

Compressor Equipment

Overview

- **Oil purification plant for turbine transformer oils:**

The oil used for the lubrication systems of generators must be cleaned, since it can contain air, moisture and various impurities. As a result, oil breakdown might take place, leading to failure of the generator thrust bearings, which can cause a serious accident. In transformers, timely cleaning and oil recovery can increase the breakdown voltage and reduce the dielectric loss factor.



Screw Compressor:

Screw (rotary) compressors have one or more rotors, which come in different designs. Screw vane compressors have become very popular.

A screw compressor is a rotary compressor in which a working chamber is formed by a body and corkscrew rotors having different tooth profiles. The body of the screw compressor is cooled by water, for the supply and removal of which the pipes are provided. To remove air in order to create an underpressure in any space, rotary water ring vacuum pumps are used. Regulation of the screw compressor productivity is usually carried out by changing the rotational speed of their rotor. The operating principles of the screw and piston compressors are basically the same and differ only in that in the piston compressor all processes take place in the same place (the working cylinder), but at different time (this is why it was required to provide valves), and in the screw compressor suction and discharging take place at the same time, but in different places separated by the rotor plates.

Piston Compressor:

The piston compressor basically consists of a working cylinder and a piston; has a suction and discharge valves, usually located in the cylinder head. For the reciprocating of piston in most reciprocating compressors there is a crank mechanism with a crankshaft. Reciprocating compressors are single- and multi-cylinder, with vertical, horizontal, V- or W-shaped and other arrangement of cylinders, single and double acting (when the piston operates both sides), as well as single-stage or multistage compression. In reciprocating compressors, automatic capacity control is usually provided depending on the compressed gas flow rate to ensure constant pressure in the discharge pipeline. There are several ways of regulation. The simplest of them is regulation by changing the shaft speed.



Products

Distributed Control Systems (DCS) in the Oil & Gas Industry :

Overview

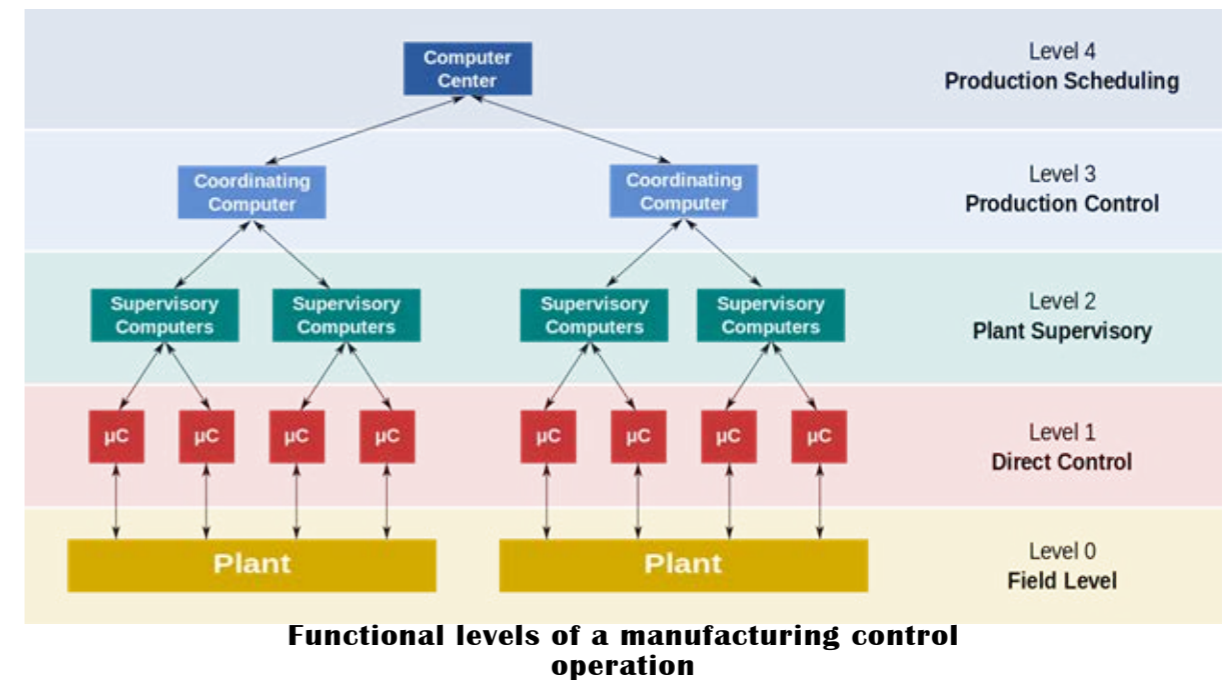


A distributed control system (DCS) is a computerised control system for a process or plant usually with many control loops, in which autonomous controllers are distributed throughout the system, but there is no central operator supervisory control. This is in contrast to systems that use centralized controllers; either discrete controllers located at a central control room or within a central computer. The DCS concept increases reliability and reduces installation costs by localising control functions near the process plant, with remote monitoring and

supervision. Distributed control systems first emerged in large, high value, safety critical process industries, and were attractive because the DCS manufacturer would supply both the local control level and central supervisory equipment as an integrated package, thus reducing design integration risk. Today the functionality of SCADA and DCS systems are very similar, but DCS tends to be used on large continuous process plants where high reliability and security is important, and the control room is not geographically remote.

Structure:

The key attribute of a DCS is its reliability due to the distribution of the control processing around nodes in the system. This mitigates a single processor failure. If a processor fails, it will only affect one section of the plant process, as opposed to a failure of a central computer which would affect the whole process. This distribution of computing power local to the field Input/Output (I/O) connection racks also ensures fast controller processing times by removing possible network and central processing delays.



The accompanying diagram is a general model which shows functional manufacturing levels using computerised control.

Referring to the diagram;

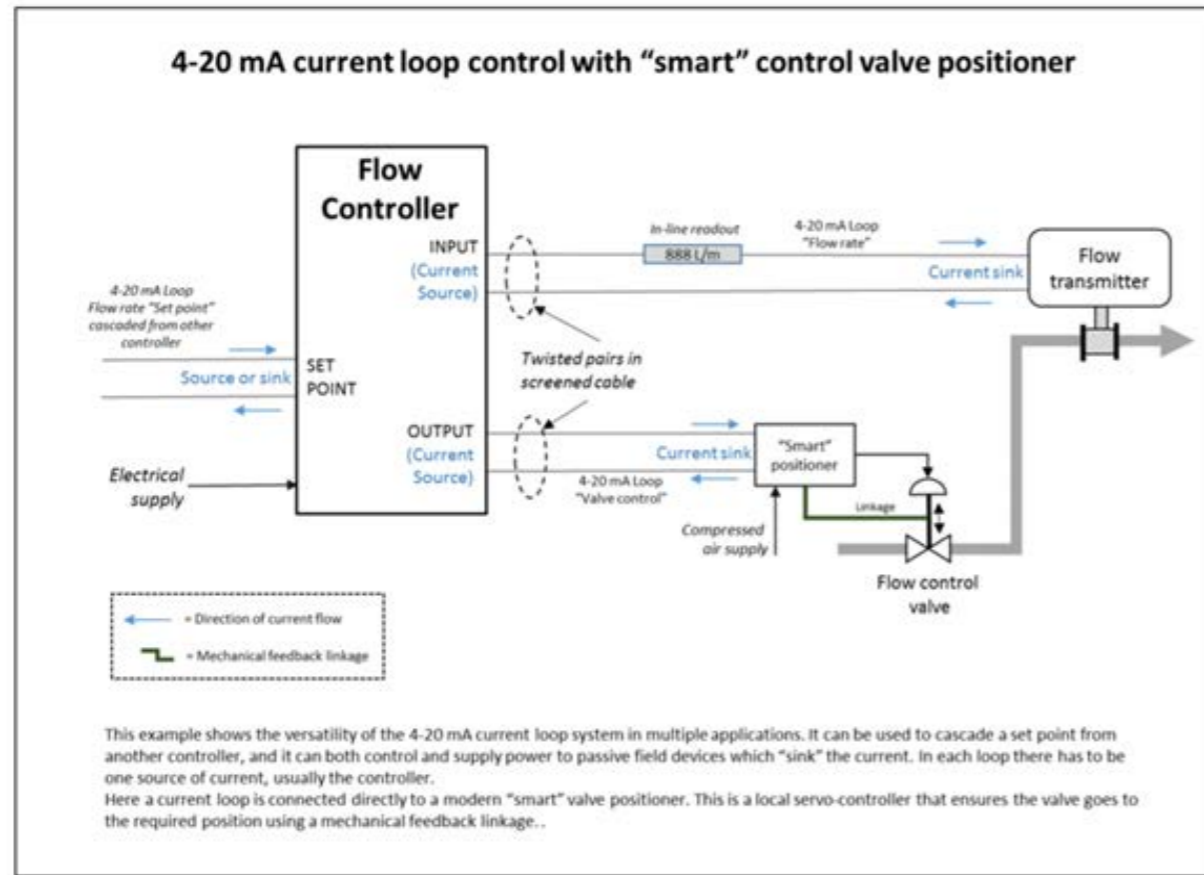
- Level 0 contains the field devices such as flow and temperature sensors, and final control elements, such as control valves
- Level 1 contains the industrialised Input/Output (I/O) modules, and their associated distributed electronic processors.
- Level 2 contains the supervisory computers, which collect information from processor nodes on the system, and provide the operator control screens.
- Level 3 is the production control level, which does not directly control the process, but is concerned with monitoring production and monitoring targets
- Level 4 is the production scheduling level.

Typical applications

Distributed control systems (DCS) are dedicated systems used in manufacturing processes that are continuous or batch oriented.

Processes where a DCS might be used include:

- Chemical plants
- Petrochemical (oil) and refineries
- Pulp and paper mills (see also: quality control system QCS)
- Boiler controls and power plant systems
- Nuclear power plants
- Environmental control systems
- Water management systems
- Water treatment plants
- Sewage treatment plants
- Food and food processing
- Agrochemical and fertilizer
- Metal and mines
- Automobile manufacturing



Example of a continuous flow control loop

Delta V lifecycle Services

Overview

SIS Functional Safety Maintenance and Proof Testing for continued safety integrity and operation in accordance with the IEC 61511 Safety Life Cycle. With this service, you will work with consultants trained in the application of IEC61511, and specifically in the maintenance of the SIS.



Filters & Filtration System

Fuel Filters

We manufacture a wide range of fuel filter that is developed using qualitative material sourced from trusted vendors. Our company gained expertise in manufacturing and



exporting and extensive range of fuel filters. These fuel filters engineered as per the ISO benchmarks and tested on various quality parameters at every stage of production.

The decontamination of diesel from the harmful particles are done efficiently by these Fuel Filters for the sake of better engine life. Before reaching to the injection system, the Fuel Filters is purified by filters from any abrasive particles.

Product Details

Material: SS
Working temperature: 55 to 400 degree cel.
Flow rate: 30-480L/min
Type: Cartridge Fuel Filter
Usage: Industrial

Filters & Filtration System

Suction Filters

Based on the skills of our adroit professionals and creative workers, we bring forth an extensive range of **Suction Filters**. Owing to features like durability and easy

installation, the offered range is extensively demanded in various industries.

A team of our skilled professionals, with wide experience, manufacture the offered suction filters using high-grade raw material and modish technology. The offered suction filters are available with us in various sizes, shapes, designs and other related specifications.



Features

- Excellent finish
- Optimum strength
- Anti-corrosive

Product Details

Size: 3" x 5.75"
Efficiency: 99%
Dimension: 47 * 84
Material: MS, SS304, SS316
Suction Pipe Size: 1.25"
Nominal Flow Rate: Upto 15 l/min

Filters & Filtration System

Simplex Basket Filter

We are engaged in offering a wide range of **Simplex Basket Filter**. These basket filters are developed and designed with the help of qualified engineers in compliance with

international quality standards. The screen fixed inside these basket filters is in the basket form which ensures easy removal of all foreign particles. Further, to cope with diverse needs of our clients, these filters are offered to our valuable patrons with various customized specifications as per their need.



Features

- Large straining area
- Low maintenance
- Appropriate mesh size
- Easy to clean

Product Details

Diameter:	1/2" to 32"
Automation Grade:	Manual
Material:	SS
Usage:	Industrial
Surface:	Polished

Filters & Filtration System

Duplex Basket Filter

We offer the finest quality **Duplex Basket Filter** that is excessively used in various industrial applications as per the requirements. Duplex Basket Filter is fabricated by

using top quality raw material implementing latest techniques. We provide Duplex Basket Filter to the clients as per their demand. While selecting filters, it should be kept in mind that the larger the filter, the longer is the operating span of the element.



Types Available:

- Single basket type
- Duplex type
- Multi sieve type

Product Details

Automation Grade:	Automatic
Material:	Stainless Steel
Material Grade:	SS316
Surface:	Finished Polished
Feature:	Corrosion Resistant

Products

Fire & Gas Detectors

A- Gas Detectors & Sensors



Rosemount™ 928 Wireless Gas Monitor



Rosemount™ 628 Universal Gas Sensor



Net Safety Millennium II Single Channel Transmitter



Net Safety Millennium II Dual Channel Transmitter



Net Safety Millennium II BASIC Single Channel Transmitter



Net Safety Millennium II ST3 XChem Toxic Gas Sensor [Electrochemical]



Rosemount™ 975UR Ultraviolet Infrared Flame Detector



Rosemount™ 975UF Ultra Fast Ultraviolet Infrared Flame Detector



Rosemount™ 975HR Multi-Spectrum Infrared Hydrogen Flame Detector



Net Safety Millennium II SC311 Infrared Combustible Gas Sensors



Net Safety Millennium II SC310 Catalytic Bead Combustible Gas Sensor



Net Safety Millennium ST Electrochemical Toxic Gas Detector



Rosemount™ 928 Wireless Gas Monitor



Net Safety Millennium ST Electrochemical Toxic Gas Detector



Net Safety Millennium SC1100 Catalytic Bead Combustible Gas Detector

C- Featured Products

D- Aspirators



GDA - Gas & Smoke Aspirator Systems



Self Compensating Duct Probe

Products

FM200 Gas System Supplier

Overview

FM200 Fire Suppression is a suitable agent for normally occupied spaces. FM200 fire suppression systems are commonly used in:

- DATA Centres
- Comms Rooms
- Telecommunication facilities
- UPS Rooms
- Medical facilities



How does FM200 work?

There is a common misconception that the FM200 Gas reduces oxygen, yet this is not true. FM200 is a synthetic/chemical fire suppression gas and extinguishes a fire by removing the free radicals or heat elements from the fire triangle. (Oxygen, Heat and Fuel).

The typical concentration of an FM200 system is normally between 7.9% to 8.5%. This concentration is determined by the risk that is being protected and by the OEM (Original Equipment Manufacturers) and the ISO14520 standards for fire suppression systems.

How safe is FM200?

FM200 fire suppression is found as an active compound as a propellant in medical inhalers. This is going without saying that FM200 gas is extremely safe for occupied spaces with the correct fire suppression design.

What is FM200 Fire Suppression?

FM200 fire suppression is also known as HFC227ea. FM200 is a waterless fire protection system, it is discharged into the risk within 10 seconds and suppresses the fire immediately.



Fire suppression control panel



Fire Suppression system warning alarm systems



Smoke Detection for fire suppression systems

What are the advantages of an FM200 fire suppression system?

The main advantage of FM200 fire suppression, is the small amount of agent required to suppress a fire. This means fewer cylinders, therefore less wasted space for storage of FM200 cylinders.

FM200 systems reach extinguishing levels in 10 seconds or less, stopping ordinary combustibles, electrical, and flammable liquid fires before they cause significant damage. FM200 extinguishes the fire quickly, which means less damage, lower repair costs. Like any other fire suppression system,

FM200 systems are designed with an extra margin of safety for people. Refilling FM200 is simple and cost effective, therefore, it also means less downtime and disruption to your business.

FM200 is classed as a clean agent which means that it is safe to use within occupied spaces. The safety of FM200 fire suppression environments is proven in over a decade of real-world experience and validated by extensive scientific studies. FM200 systems take up less storage space than most other fire suppressants.



Products

Fittings

Overview

We offer the following Fittings, ready to meet the highest requirements of the Client:

Butt-welded fittings including elbows, tees, concentric & eccentric reducers, caps, crosses and laterals for Oil & Gas industry, both onshore and offshore.

- **Diametres:** up to 120"
- **Materials:** Ranging from commodity WPB and low temperature WPL6, to high yield grades (up to WPHY - 100), low & high alloys such as WP5, WP11, WP22, WP91, Alloy 276, Alloy 400, Alloy 625, Alloy 825 and other nickel alloys, as well as stainless steel grades.
- **Special Materials and Products:** We also specialize in clad materials of all grades. Our current range includes all grades of fittings up to 102" as well as 3D elbows, crosses, headers, transition pups, and prefabricated pipeline components.



Flanges

ASTM A105 Carbon Steel Flanges

Overview

Carbon Steel A105 Reducing Flange is a special type of flange. Typically the Carbon Steel A105 Reducing Flange is most often used on projects that require the fitting of different sized pipes together. This carbon steel reducing ANSI A105 Flanges consists of a flange with one specified diameter that has a bore of a different and smaller diameter.

Carbon Steel A105 Blind Flange Type:



ASTM A105 Carbon Steel Slip On Flanges



Carbon Steel A105 Socket Weld Flanges



ASTM A105 Carbon Steel Blind Flanges



ASTM A105N Raised Face Flanges



Carbon Steel ASTM A105 Male and Female Flanges



Those flanges made from standard **ASTM A105** most commonly use carbon steel material grade. This grade of carbon steel material has been used to manufacture forge piping components such as flange and forged fittings for small diameter piping. This carbon steel material grade is used to manufacture standard ASTM A105 Flanges. The ANSI A105 Flanges is used for ambient- as well as higher-temperature applications in pressure systems.

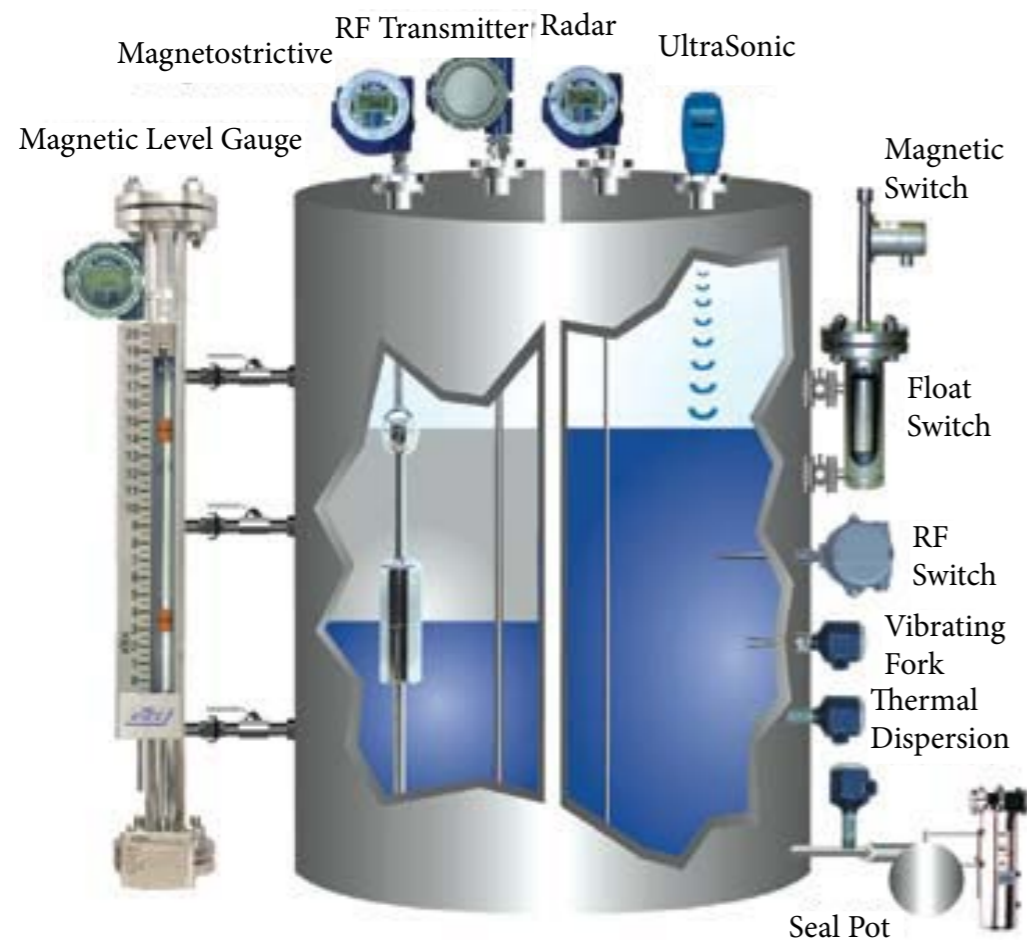
However, there is a limitation on the use of **Carbon Steel A105** Flanges standard. The weight of the forging made by **ASTM A105** Flanges material must not exceed a maximum weight of 4540 Kgs. For forged fittings that are heavier than 4540 Kgs, the flanges are produced by using **ASTM A266**.

ASTM 105N/ ASTM A105 Flange Material Specification:

ASTM A105 Flange Material :	ASTM A105 CL1/CL2
ASTM A105 Flanges Size Range:	1/2" (15 NB) to 48" (1200NB), ASME B16.47 Flanges size range: 26" to 60"
Flanges A105 Material Typical manufacturing specifications:	ASTM A105 Carbon Steel , ASME ASTM A105 Carbon Steel
ASTM A105 Normalized Flanges Origin:	European Origin, Indian Origin, US Origin, Korean Origin, Sweden Origin, Ukraine Origin, Japanese Origin Materials
ASTM A105 Flanges Manufacturing Dimensions:	ANSI/ASME B16.5, B 16.47 Series A & B, B16.48, BS4504, BS 10, EN-1092, DIN, etc.
ANSI A105 Flanges Standard:	ANSI Flanges, ASME Flanges, BS Flanges, DIN Flanges, EN Flanges, etc.
ASTM A105 Carbon Steel Flanges Class / Pressure:	150#, 300#, 600#, 900#, 1500#, 2500#, PN6, PN10, PN16, PN25, PN40, PN64 etc.
Flange Face Type:	Flate Face (FF), Raised Face (RF), Ring Type Joint (RTJ), LJ, FM , R.T.J , R.J and so on
ANSI, ASTM A105 Flanges:	150 to 2500 Size: 1/2"-24"
AWWA ASTM A105 Flanges:	classes B, D, E, F Size: 3"-144"
ANSI B16.5 ASME SA105N Flanges pressure classes:	150, 300, 400, 600, 900, 1500 and 2500 for ASME B16.5
ANSI B16.47 ASME SA105N Flanges pressure classes:	75, 150, 300, 400, 600, 900 for ASME B16.47
ASTM A105 Wnrf Flanges Specialized in:	ASTM A105/105N SORF, SOFF, BLRF, BLFF, WNRF, WNFF, SWRF, SWFF, Threaded RF, Threaded FF & LJ

Products

PPS Offers products range consists of level gages, level indicator, Flow indicator, Industrial Type Valves, and Duplex Type Strainers. In adding to this, these products are applauded by our customers for user-friendly, strong construction, low maintenance, sturdy design, and longer service life. To meet our customers' needs, we bring forth our products with the qualitative configuration in a convenient way.



We have capable professionals who work in close adroitness with clientele to accomplish the demands. Highly experienced employee, they are chosen on the basis of their understanding and work hard to achieve the growth of our organization. Apart from this, industrial valves and strainers offered by us are strictly tested on different parameters in obedience to the set industry norms.

Industrial Valves

Pressure Relief Valve

The pressure relief valve (PRV) is a type of valve used to control or limit the pressure in a system or vessel which can build up for a process upset, instrument or equipment failure, or fire. The pressure is relieved by allowing the pressurised fluid to flow from an auxiliary passage out of the system.



Product Details

- **Material:** Stainless Steel
- **Brand:** SVE
- **Spring:** CARBON STEEL/ ALLOY STEEL
- **BODY:** ASTM A 216 GR. WCB/WC6/CF8/CF8M
- **Usage:** Industrial

Flow Indicator

Sight Flow Indicator

A sight flow indicator is a device installed into a pipe to provide a visual of verifying liquid flow for direction and accurate flow rate. Sight flow indicators allow operators to observe the colour and clarity of liquids through a window.

A sight flow indicator is a body with one or more viewing windows, usually with gaskets, and a way to mount the indicator to the pipeline, such as flanged, threaded, or sanitary clamp connections. Sight flow indicators are available to fit standard pipe sizes ranging



Product Details

Brand SVE
Material SS
Flange dia. 51 mm
Size 1/4-inch to 16-inches
Available Size 1" to 4"
Operating Temperature 150 to 300 deg C

from 1/4-inch to 16-inches and carry ANSI pressure ratings. Sight flow indicators allow direct observation that does not give a false reading, lose power, or unable to read. Sight flow indicators may be applied to almost every phase of the movement, whether it is liquid, gas or powder. Operators of the Sight flow indicator can see the approximate rate of flow, direction of flow, and condition without interrupting process flow

Flow Indicator

Wheel Flow Strainers

We are instrumental in providing our clients with a comprehensive range of Wheel Flow Strainers. Backed by a team of experts, these indicators are manufactured using high-

grade raw material and advance technology by skilled professionals.

Our offered product is precision-designed, in order to meet the international standards. Furthermore, these indicators are availed in various sizes and other related specifications, as per the varied needs of our valuable clients. Our range is stringently tested on various parameters to assure it on counts of quality.



Features

- Rust proof
- Strong construction
- Easy to install

Product Details

- **Brand:** SVE
- **Material Grade:** SS304
- **Usage:** Industrial
- **Material:** Stainless Steel
- **Size Dimension:** Standard

Flow Indicator

Sight Glass Indicator

With a desire to cement our reputation in the market, we are engaged in offering an excellent range of Sight Glass Indicator. Keeping in mind current market development,

these indicators are manufactured by our qualified professionals employing premium quality raw material and modernise tools. Apart from this, our quality controllers perform a series of test on the entire range ensuring its flawlessness. Clients can avail the offered indicators from us at market leading prices.



Features

- Rust proof
- Durability
- Require less maintenance

Product Details

- **Brand:** SVE
- **Display Type:** Analog
- **Material:** Stainless Steel, carbon Steel
- **Size:** 1 to 12 inch
- **Temperature:** 350 Degree Celsius

Flow Indicator

Full View Flow Indicator



Features

- Rust proof
- Durability
- Require less maintenance

Product Details

- Brand SVE
- Size 1 to 12 inch
- Material Steel
- pressure Rating 10 kg/cm2

Level Gauges

Level Gauges Instruments

Owing to the technologically advance manufacturing facilities we have been able to offer an exclusive range of **Level Gauges Instruments** that are widely used in pressure vessels, tanks and boilers.



Features

- Rigid construction
- Seamless finish
- High tensile strength
- Low maintenance cost
- Highly durable

Product Details

- **Material:** Stainless Steel
- **Size:** 15 NB to 100 NB
- **Brand:** SVE
- **Usage:** Industrial
- **Pressure:** 100 bar
- **Measuring Range:** 300 to 3500 mm
- **Operating Temperature:** 300 Deg C
- **Material Grade:** SS316

Level Gauges

Water Level Indicators

Riding on unfathomable volumes of industrial expertise, we are offering an excellent range of manufacturing the entire range. Moreover, our offered product can be availed in a wide range of sizes and shapes, as per the requirements of our esteemed clients. Our valuable clients can get these indicators from us at market leading prices.



Features

- Rust proof
- Enhanced durability
- Compact design

Product Details

- **Brand:** SVE
- **Application:** Industrial, Laboratory
- **Frequency:** 50-60 Hz
- **Distance:** 100 mm to 4000 mm
- **Power Consumption:** 10 W

Level Gauges

Oil Level Gauge LBT

Providing you the best range of oil level gauge lbt, hydroline level gauge, level gauges instruments, water level indicators, klinger gauge glasses and multi level gauge with effective & timely delivery.

Contact of in-housed switches changes with movement of floats in correspond to rising/falling of liquid Level, thus giving potential free contact outputs. The sensors are custom made in top mounting versions in SS / PP construction. Top mounted models are available in single or multi-level sensing types in various lengths. These are made available to our customers at industry leading rates.



Features

- Correct fork length
- Threaded connection
- Accurate enclosures

Product Details

- **Material:** Stainless Steel
- **Size:** 15 NB to 100 NB
- **Brand:** SVE
- **Usage:** Industrial
- **Pressure:** 100 bar
- **Measuring Range:** 75 KG 2 CM

Level Gauges

Hydroline Level Gauge

Owing to the technologically advance manufacturing facilities we have been able to offer an exclusive range of Hydroline Level Gauge 3 to our clients.



Features

- Free from flaws
- Excellent design
- Quality approved

Product Details

- **Material:** Stainless Steel
- **Temperature:** Up to 125 Deg C
- **Brand:** Sri Venkat Engineers
- **Pressure:** 100 bar
- **Material Grade:** 75 KG 2 CM
- **Measuring Range:** 300 to 3500 mm

Level Indicator

Oil Sight Level

We bring forth an advanced assortment of **Oil Level Sight Glass** to our deemed clients. Offered sight glass is used in measurement of oil in various industries and sectors.

Moreover, this range is designed as per ongoing trends of the market in compliance with the industry laid standards and norms. In addition to this, patrons can avail diverse customization options from us along with diverse sizes, grades and dimensions as per the patrons needs and demands.



Features

- High tensile strength
- Robust construction
- Fine surfacing
- Corrosion resistant

Product Details

Size:	15 NB to 300 mm NB
Brand:	SVE
Usage:	Industrial
Enclosure:	IP 55 OR IP 65 on request
Display Type:	Analog
Material Grade:	SS304
Window:	Toughened Borosilicate Glass

Level Indicator

Constant Oil Level Indicator

We have established ourselves as leading name of **Constant Oil Level Indicator** in the market at present. Contact of in-housed switches changes with movement of

floats in correspond to rising/ falling of liquid Level inside tank, thus giving potential free contact outputs. The sensors are custom made in top mounting versions in SS / PP construction. Top mounted models are available in single or multi-level sensing types in various lengths. These are made available to our customers at industry leading rates.



Features

- Correct fork length
- Accurate enclosures
- Threaded connection

Product Details

Display Type:	Analog
Size:	1/2" TO 2"
Material:	CS
End Fitting:	SCREWED
Brand:	SVE
Model:	OLIC

Level Indicator

Level Indicators

We have established ourselves as leading name of Level Indicator in the market at present. Contact of in-housed switches changes with movement of floats in correspond

to rising/falling of liquid Level inside tank, thus giving potential free contact outputs. The sensors are custom made in top mounting versions in SS / PP construction. Top mounted models are available in single or multi-level sensing types in various lengths. These are made available to our customers at industry leading rates.



Features

- Correct fork length
- Accurate enclosures
- Threaded connection

Product Details

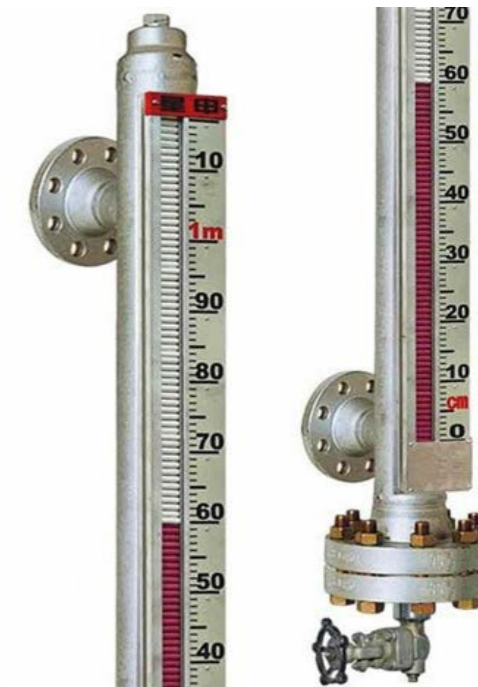
Brand: SVE
Material: Stainless Steel
Ambient Temp: -20 to 60 deg C
Application: Industrial
Material Grade: SS316

Level Indicator

Gauge Sight Glass

We are a reputed firm specialized in offering **Gauge Sight Glass** to our clients Offered range is precisely fabricated under the astute guidance of our assiduous teammates who

make use of supreme grade raw material and other components as per the ongoing market trends to achieve the desired results Moreover these products find numerous applications in various industries and sectors Patrons can thus avail this range in diverse sizes and other detailed specifications
Features Low maintenance
Accuracy Smooth edges



Product Details

Material: MS/Glass
Type: Column/Flap
Measure Range: 150~16000mm
Indication: Field or with Transmitter
Usage: Industrial
Temperature: 0-100 Degree Celsius
Diameter: 5-10 cm

Rubber Conveyor Belts

Oil and Grease Resistant Belts

Overview

To avoid swellings, twists and other damages, conveyor belts UNIOIL, produced in three levels of resistance to oils and greases OIL, OILPLUS and OILULTRA, are a valuable partner for your transportation of aggressive material.

OIL Covers: medium oil resistant to oil and grease. Carcass: Not resistant to oil and grease. Usage: Suitable for the transport of products with a low level of vegetable oils or animal fat.



OIL PLUS Covers: good resistance to oil and grease. Carcass: Medium oil resistant to oil and grease. Usage: Suitable for the transport of more aggressive products, such as resins, cellulose, fertilizer, animal feed, soybeans, etc.

OILULTRA Covers: highly oil resistant to oil and grease. Carcass: medium oil resistant to oil and grease. Usage: excellent resistance to oils and fats. can convey materials containing mineral oils, anti-caking agents for the production of fertilizers, more aggressive resins, etc.

Industrial Rubber Hoses

Gas and Welding Hoses



GPL/HD

STRUCTURE

- Tube:** Lpg resistant, conductive black nbr rubber.
- Reinforcement:** High tensile synthetic textile.
- Cover:** Ozone, weather, heat, flame and oil resistant.
- Surface:** Smooth with fabric impression.

Industrial Rubber Hoses

Oil and fuel hoses



Tank Truck/HD EN 12115

STRUCTURE

- Tube:** oil and petrol resistant, conductive nbr.
- Reinforcement:** high tensile synthetic textile, antistatic copper wire
- Cover:** oil, weather, ozone, abrasion and sea water resistant.
- Surface:** Smooth with fabric impression.

Industrial Rubber Hoses

Chemical delivery hoses



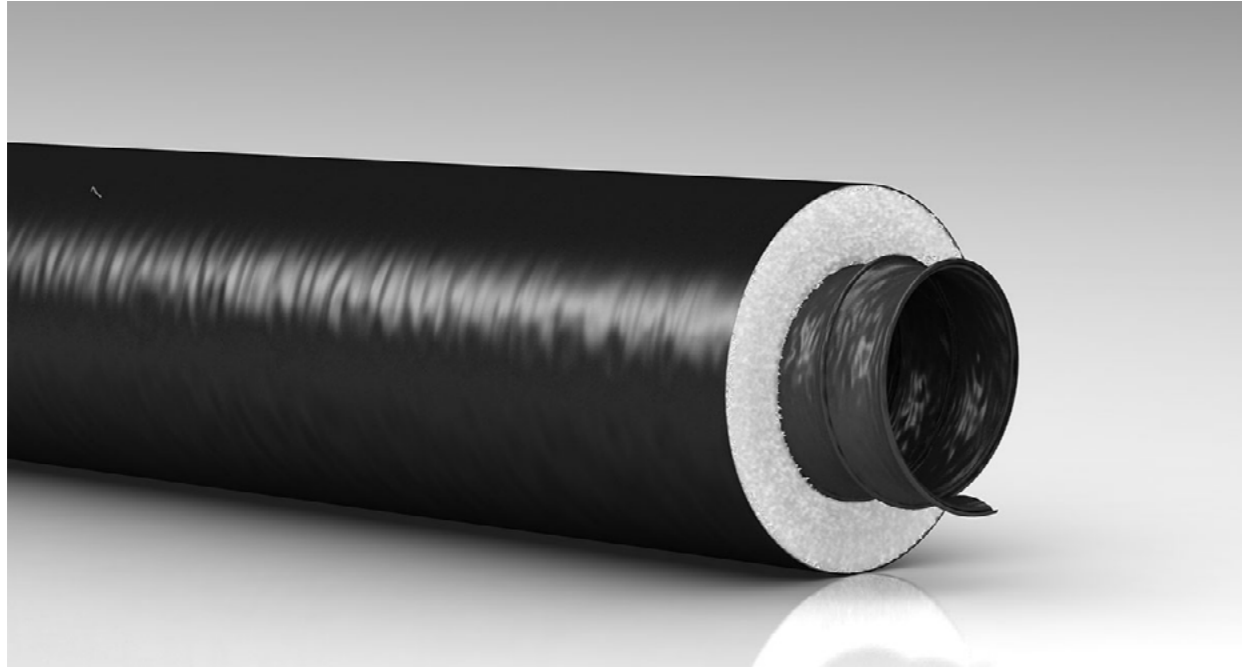
Cordlinked/ SP EN 12115

STRUCTURE

- Tube:** Translucent, food grade U.H.M.W-PE (Ultra High molecular Weight Polyethylene) liner suitable for wide range of corrosive chemicals and solvents.
- Reinforcement:** High tensile synthetic textile, steel wire helix and 2 antistatic copper wires.
- Cover:** Weather, ozone, abrasion resistant EPDM rubber.
- Surface:** Smooth with fabric impression.

Flexible PVC Hoses

Air Conditioning Hoses



Artic Therm

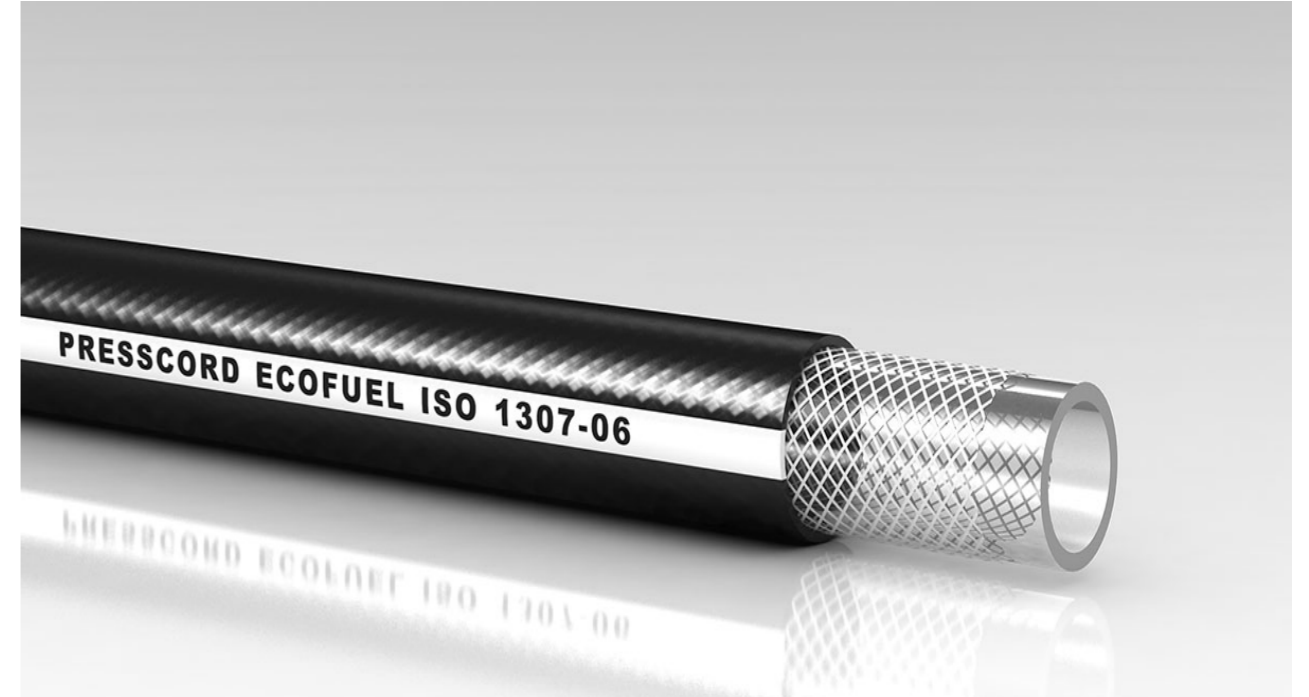
STRUCTURE

Construction: Flexible hose made from addivated polyolefin resin film and steel wire helix. Thermo-insulating covering in polyester fibre (thickness 25mm/16kg m3). Outer anti-steam protection in addivated polyolefin resin.

Temperatures: Min: -20 °C Max: 90/110 °C.

Flexible PVC Hoses

Oil suction delivery spiral pvc hoses



Presscord Green Fuel

STRUCTURE

Tube: Transparent pvc compound tube, one wire syntetic textilebraid reinforcement

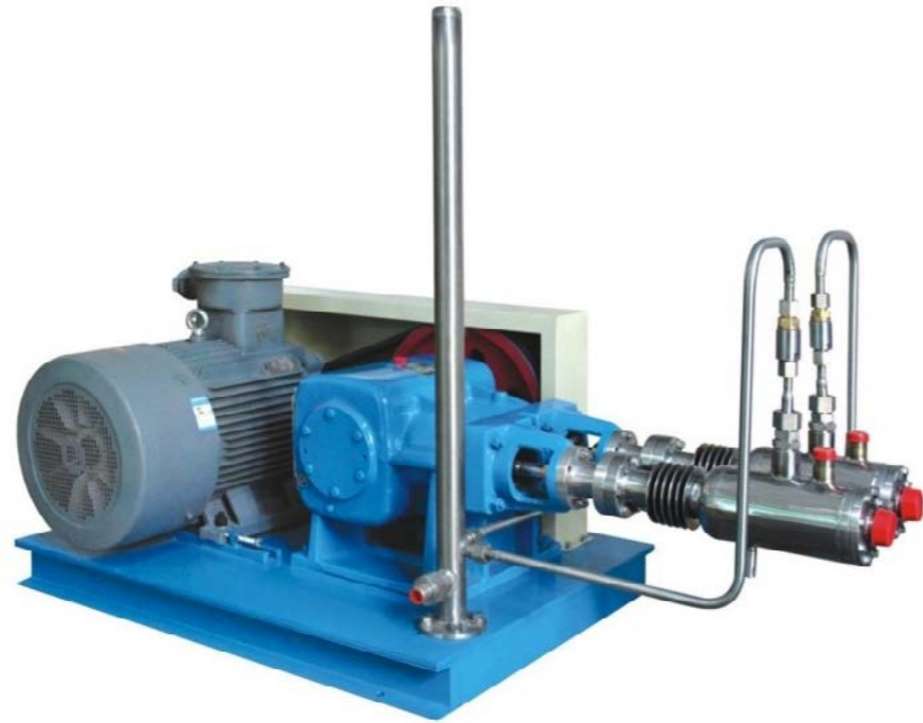
Reinforcement: One wire syntetic textile braid reinforcement.

Cover: Black pvc compound cover, oil and weather resistant.

Surface: Smooth extruded

Products

L-CNG High Pressure Pump



Product Details

Place of Origin:	Zhejiang, China
Theory:	Reciprocating Pump
Structure:	Piston Pump
Power:	Depends on flow rate and pressure
Standard or Nonstandard:	Non-Standard
Pressure:	High Pressure
Material:	Cast Iron
Color:	Customized
Liquid:	Oxygen/Argon/CO2 Filling Pump
Motor:	Electric motor (EX)
Flow Rate:	15 To 30000+ L/H
Feature:	High Efficiency
Weight:	300-800kgs more or less



Products

Piston LNG Feed Pump and Booster Pump



Product Details

Place of Origin:	Zhejiang, China
Theory:	Reciprocating Pump
Structure:	Piston Pump
Power:	Depends on flow rate and pressure
Standard or Nonstandard:	Non-Standard
Pressure:	High Pressure
Material:	Cast Iron
Color:	Customized
Liquid:	Oxygen/ Argon/CO2 Filling Pump
Motor:	Electric motor (EX)
Flow Rate:	15 To 30000+ L/H
Feature:	High Efficiency
Type:	Single cylinder/Double cylinder/Triple Cylinders



Products

Soild Control Equipment

Overview

Solids control is a technique used in a drilling rig to separate the solids in the drilling fluids that are crushed by the drill bits and carried out of the well surface.

Normally, a solid control system contains five stages: the mud tank, shale shaker, vacuum degasser, desander, desilter, and centrifuge.

The **shale shaker** is used to separate big solids with diameter above 75 μ m, the desander addresses solids from 45-74 μ m, and the desilter segregates solids between 15-44 μ m. Sometimes the desander and desilter are combined as one high efficiency mud cleaner. When air enters the drilling fluids, a vacuum degasser is used to separate the air. When there is no air in the mud, the degasser works as a big agitator. All these stages are mounted on the top of the mud tank. After separating the solids, the clean mud can be pumped into the borehole again.



A-Shale Shaker

Overview

Shale Shaker is the first phase solids control equipment in oil drilling mud control system. Shale shaker is the first phase solids control equipment in oil drilling mud solids control system and the important equipment in the mud recycling system as well. Generally, there are single shale shaker, duplex shale shaker and triple shale shaker. KES can provide the shale shaker in different treatment capacity with customized service as per clients' requirement.

Features

- Super G vibratory motors, free maintenance and powerful dual motors apply 7.5 G~8 G to screen frame.
- Option screen angle adjustment while drilling from -3°-3°.
- Screen makes fine separation, easy for removal and installation.
- Shaker rapid positioning.
- Vibratory motor uses OLI or MARTIN.



B-Vacuum Degasser

Overview

Vacuum degasser, also called Negative Pressure Degasser, is a special solids control equipment to handle the gas cut drilling fluid

Vacuum degasser, also called Negative Pressure Degasser, is a special solids control equipment to handle the gas cut drilling fluid, removes the small bubbles entrained gas left in the mud and plays an important role to return mud proportion and stabilize mud performance. Generally, vacuum degasser is also matched with mud/slurry recycling clarification systems.

Specifications

- **Model:** KAZCQ270, KAZCQ360
- **Tank Diameter(mm):** 820 , 920
- **Treatment Capacity(m³/h):** ≤270 , ≤360
- **Vacuum(Mpa):** -0.02~-0.04 , -0.02~-0.04
- **Main Motor Power(kW):** 22, 37
- **Explosion-proof:** Exd11Bt4/IECEX/A-TEX , Exd11Bt4/IECEX/A-TEX



Products

C- Mud Cleaner

Overview

Mud Cleaner is the second phase or the third phase solids control equipment.

Mud Cleaner is the second phase or the third phase solids control equipment, and it is a combination of desander, desilter and underneath shale shaker with the features of compact structure, small footprint and great efficiency. It is an ideal equipment as the second or the third phase solids control equipment.

Specifications

- **Model:** KAZJ113-1S8N, KAZJ113-2S12N
- **Desander Cyclone Size:** 10" (DN250) , 10" (DN250)
- **Treatment Capacity(m³/h):** 120, 240
- **Work Pressure(Mpa):** 0.25:0.4
- **Inlet Size:** DN150
- **Outlet Size:** DN200



Products

D- Desander

Overview

Desander is the second phase solids control equipment in drilling operation. Generally, there are a set of hydrocyclones in 8", 10" or 12" in the desander

Desander is the second phase solids control equipment in drilling operation. Generally, there are a set of hydrocyclones in 8", 10" or 12" in the desander, which mainly used for separating the solid particles sized in 47~76 μ m from the drilling fluids. The desander cleaner mainly consists of shale shaker, hydrocyclones, distribution manifold, and electric control cabinet and desander removes the abrasive solids from the drilling fluids which cannot be removed by shale shaker.

Specifications

- **Model:** KAZJ112-1S/2S , KAZJ113-1S/2S/3S
- **Desander Cyclone Size:** 10" (DN250) , 10"(DN250)
- **Treatment Capacity(m³/h):** 120/240/360
- **Work Pressure(Mpa):** 0.25:0.4
- **Inlet Size:** DN150
- **Outlet Size:** DN200



Productcs

E- Desilter

Overview

Desilter is the third phase solids control equipment to handle the drilling fluids. Generally, there are a set of hydrocyclones in 4" or 6" in the desilter.

Desilter is the third phase solids control equipment to handle the drilling fluids. Generally, there are a set of hydrocyclones in 4" or 6" in the desilter, which mainly used for separating the solid particles sized in 15~47 μ m from the drilling fluids. The desilter cleaner mainly consists of shale shaker, hydrocyclones, distribution manifold, and electric control cabinet and desilter removes the solid particles from the drilling fluids which cannot be removed by shale shaker and desander.

Specifications

- **Model:** KAZJ112-8N/12N , KAZJ113-8N/12N/16N
- **Desilter Cyclone Size (inch):** 4" (DN100) , 4" (DN100)
- **Treatment Capacity(m³/h):** 120/240/360
- **Work Pressure(Mpa):** 0.25:0.4
- **Inlet Size:** DN150
- **Outlet Size:** DN200



Productcs

Products

Steel Pipe & Tube Production

Overview

PPS provides comprehensive oil and natural gas pipeline services including: oil and gas facility construction, Design/Build services, oil and gas pipeline infrastructure construction, pipeline installation and maintenance,

Our large, modern and specialised equipment fleet allows us to execute every type of oil & gas pipeline construction, reliably, flexibly and quickly.

A- Seamless pipe

B- Welded Pipe

C- LINE Pipe

D- OCTG Products

E- Hollow Section

F- Coating Pipe

G- Stainless Steel

A- Seamless pipe

A.1 - Seamless steel pipe

Design Feature

Used for oil and gas transportation, the general structure, mechanical structure.

- **Top quality:** Hydraulic test, X-ray, offer-Line UT, Eddy Current Inspection, etc, 3rd party inspection to test.
- **Certificate share:** MTC, ISO Inspection report and other quality certification.

Design Standard: API5L, ASTM A106/A53, DIN2391, ASTM A179/A192, EN10210,EN1028

Body material: GR.B, X42, X46, X52, S355J0H, S355J2H, 10#, 20#, 316L. 30

Size: OD: 13.72-914.4mm / **WT:** 1.65-22mm

Length: 0.5mtr-20mtr

Heat Treatment: Annealed, Normalized, Stress relieved, Cold finished, quenched and tempered.

Delivery conditions: BKS, NBK, BK,BKW,GBK(+A),NBK(+N),BK(+C)

Pipe ends: with plain ends, with beveled end, profiled coatings and linings: bared and coated



A- Seamless pipe

A.2 - Carbon steel pipe

Design Feature

Used for oil and gas transportation, the general structure, mechanical structure.

- **Top quality:** Hydraulic test, X-ray, offer-Line UT, Eddy Current Inspection, etc.
- **Certificate share:** MTC, ISO Inspection report and other quality certification.

Design Standard: API5L, ASTM A106/A53, DIN2391, ASTM A179/A192, EN10210,EN1028
Body material: GR.B, X42, X46, X52, S355J0H, S355J2H, 10#, 20#
Size: OD: 13.72-4064mm / **WT:** 1.65-40mm
Length: 0.5mtr-20mtr
Heat Treatment: Annealed, Normalized, Stress relieved, Cold finished, quenched and tempered.
Delivery conditions: BKS, NBK, BK,BKW,GBK(+A),NBK(+N),BK(+C)



A- Seamless pipe

A.3 - Alloy Steel Tube

Design Feature

Design Standard: ASTM A335 P5, P9, 911, P22, P91 / ASTM A213 T5, T9, T11, T22, T91/
 ASTM A519 4130, 4140 /42
Size: Out Diameter: 1/2” to 26”, wall thickness: less than 0.25”
Length: 5800mm, 6000mm; 6096mm; 11800mm; 12000mm; and so on.
Max Length: 16000mm.

Mechanical Properties

Tensile strength, MPa	Yield Strength, MPa	Elongation, %
415 min	205 min	30 min



A- Seamless pipe

A.4 - Structural Tubes

Design Feature

Applicable to the general structure, mechanical structure with seamless steel tubes.

- **Top quality:** Hydraulic test, X-ray, offer-Line UT, Eddy Current Inspection, etc.
- **Superior service:** Professional after sales personnel to provide product support, use maintainance and other services

Design Standard: ASTM A519 1010, 1020, 1025, 1035, 1045. ASTM A513 1010, 1020, 1025, 1035, 1040
Size: OD: 10.3mm - 711.2mm
Length: random length, fixed length, SRL, DRL
Heat Treatment: Annealed, Normalized, Stress relieved, Cold finished, quenched and tempered.
Delivery conditions: BKS, NBK, BK, BKW, GBK(+A), NBK(+N), BK(+C)



A- Seamless pipe

A.5 - Boiler steel pipe

Design Feature

Used in heat exchangers, condensers, heat transfer equipment, similar pipes and as superheater tubes for high pressure settings.

- **Top quality:** Hydraulic test, X-ray, offer-Line UT, Eddy Current Inspection, etc.
- **Superior service:** Professional after sales personnel to provide product support, use maintainance and other services

Design Standard: ASTM A192 (ASME SA192)
Grade: A192
Size: OD: 6.0mm-114.0mm / WT: 1.0mm-15.0mm
Length: 0.5mtr-20mtr
Heat Treatment: Annealed, Normalized, Normalized and Tempered



A- Seamless pipe

A.6 - Fluid Transmission pipe

Design Feature

Applicable to transport liquid, gas, oil etc.

- **Top quality:** Hydraulic test, X-ray, offer-Line UT, Eddy Current Inspection, etc.
- **Superior service:** Professional after sales personnel to provide product support, use maintainance and other services

Design Standard: ASTM A106/A53, ASTM SA53/SA-53M

Size: OD: 19.05-168.3mm

Length: random length, fixed length, SRL, DRL

Wall Thickness: 2.31-14.27mm

Heat Treatment: Annealed, Normalized, Stress relieved, Cold finished, quenched and tempered.

Delivery conditions: BKS, NBK, BK,BKW,GBK(+A),NBK(+N),BK(+C)



B- Welded Pipe

B.1 - SSAW Steel Pipe

Design Feature

Used for low pressure liquid delivery, such as water, gas, and oil.

- **Top quality:** Hydraulic test, X-ray, offer-Line UT, Eddy Current Inspection, etc, 3rd party inspection to test.
- **Certificate share:** MTC, ISO Inspection report and other quality certification.

Design Standard: API 5L, ASTM A252, DIN2458, EN10025

Body material: GR.B, ST37, ST52, X42, X52, X56, X60

Size: OD: 219.1mm - 4064mm (8" - 160")

Length: 6mtr - 18 mtr

Surface: Lightly oiled, hot dip galvanized, electro galvanized, black, etc.



B- Welded Pipe

B.2 - LSAW Steel Pipe

Design Feature

Used for low pressure liquid delivery, such as water, gas, and oil.

- **Top quality:** Hydraulic test, X-ray, offer-Line UT, Eddy Current Inspection, etc, 3rd party inspection to test.
- **Certificate share:** MTC, ISO Inspection report and other quality certification.

Design Standard: API5L, ASTM A106/A53, DIN2458, EN10217

Size: OD: 219mm - 1820mm

Length: 6mtr-18mtr

Body material: GR.B, ST37 , ST52, X42 , X52, X56, X60

Surface: Lightly oiled, hot dip galvanized, electro galvanized, black, etc.



Productcs

B- Welded Pipe

B.3 - ERW Steel Pipe

Design Feature

Used for low pressure liquid delivery, such as water, gas, and oil.

- **Top quality:** Hydraulic test, X-ray, offer-Line UT, Eddy Current Inspection, etc, 3rd party inspection to test.
- **Certificate share:** MTC, ISO Inspection report and other quality certification.

Design Standard: API5L, ASTM A53, EN10217, BS1387-85

Size: OD: 6mm - 610mm (1/16" - 24")

Length: .5mtr-20mtr

Body material: GR.B, ST37 , ST52, X42 , X52, X56, X60

Surface: Lightly oiled, hot dip galvanized, electro galvanized, black, etc.

Packing: Bare of bundled or pvc packing ect.



Productcs

C- LINE Pipe

C.1 - Oil Line Pipe

Design Feature

Used for conveying gas, water, and oil in both and natural gas industries etc.

- **Top quality:** Hydraulic test, X-ray, offer-Line UT, Eddy Current Inspection, etc, 3rd party inspection to test.

Design Standard: API5L, ASTM A106/A53.
Size: OD: 2 3/8" - 4 1/2" (60.3mm-114.30mm)
Length: R1(4.88mtr-7.62mtr), R2(7.62mtr-10.36mtr), R3(10.36mtr or longer)
Body material: GR.B, X42 , X46, X52
Heat Treatment: Annealed, Normalized, Stress relieved, Cold finished, quenched and tempered.



C- LINE Pipe

C.2 - Gas Line Pipe

Design Feature

Used for conveying gas, water, and oil in both and natural gas industries etc.

- **Top quality:** Hydraulic test, X-ray, offer-Line UT, Eddy Current Inspection, etc, 3rd party inspection to test.

Design Standard: API5L, ASTM A106/A53
Size: OD: 2 3/8" - 4 1/2" (60.3mm -114.30mm)
Length: R1(4.88mtr-7.62mtr), R2(7.62mtr-10.36mtr), R3(10.36mtr or longer)
Body material: GR.B, X42 , X46, X52
Heat Treatment: Annealed, Normalized, Stress relieved, Cold finished, quenched and tempered.



D- OCTG Products

D.1 - Casing & Tubing Drill pipe

Welding Casing

Grades: API 5CT H40, J55, L80, N80, and P110 and propriety
Diameters: 2 3/8 -16 inch(60.3mm)
Wall Thickness: 0.190-0.545 in (4.8 - 13.8mm)
Lengths: range 1 , 2 , and 3



Seamless Casing

Grades: API 5CT N80, L80, P110 and proprietary CF95.
Diameters: 7-9 5/8 in (177.8 - 244.5 mm)
Wall Thickness: 0.231 - 0.557 in (5.9-14.1mm)



Drill Pipe

Grades: E, X , G, S
Sizes: 2 3/8" to 6 5/8"



HWDP

Accodring to API 7 and API RP 7G
Size Range: 3 1/2" to 6 5/8"
Hard Banding: as per request



E- Hollow Section

E.1 - Square Tube

Design Feature

Used for conveying gas, water, and oil in both and natural gas industries etc.

- **Top quality:** Hydraulic test, X-ray, offer-Line UT, Eddy Current Inspection, etc, 3rd party inspection to test.

Design Standard: ASTM A500, ASTM A53, EN 10210, EN 10219, JIS G3466, BS 1387.
Size: OD: 20mm * 20 mm -1200mm * 1200mm
Length: 0.3 mtr - 18 mtr
Welded: ERW, HFW
Coating: Hot- dippeed Galvanised, Electrical Galvanised.



E- Hollow Section

E.1 - Rectangular Tube

Design Feature

- **Top quality:** Hydraulic test, X-ray, offer-Line UT, Eddy Current Inspection, etc, 3rd party inspection to test.
- **Timely Quotation:** Professional sales quote for you after receive your inquiry.

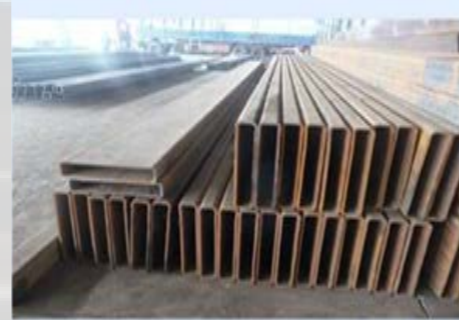
Design Standard: ASTM A500, ASTM A53, EN 10210, EN 10219, JIS G3466

Size: OD: 20mm * 30 mm -1100mm * 1200mm

Length: 0.3 mtr - 18 mtr

Welded: ERW, HFW

Coating: Hot- dippeed Galvanised, Electrical Galvanised.



Productcs

F- Coating Pipe

F.1 - Galvanized Pipe

Design Feature

- **Top quality:** Hydraulic test, X-ray, offer-Line UT, Eddy Current Inspection, etc, 3rd party inspection to test.

- **Surface condition of the galvanized tubes**

First layer - electrolytically leached Zinc (Zn) - acts as anode and in a corrosive environment it corrodes first and the base metal is cathodically protected against corrosion. the zinc layer thickness may be in the range of 5 to 30 micrometers.

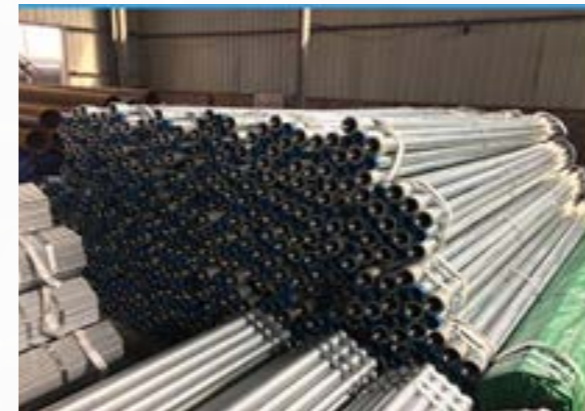
Length of the galvanized tubes:

- in diameter 4 - 16 mm 6000 + 100mm

- in diameter 18 - 42 mm 6000 + 50 mm

The steel grades for the zinc coated tubes:

- E 235+N and E 355+N



Productcs

F- Coating Pipe

F.2 - 3PE Steel Pipe

Design Feature

- **Top quality:** Hydraulic test, X-ray, offer-Line UT, Eddy Current Inspection, etc.
- **3PE anto-corrosion steel pipe** is the three-layer structure of polyolefin (MAPEC) external corrosion steel pipe, is commonly used as a preservative pipeline, there are oth IPN8710, FBE epoxy powder, such as coal tar epoxy anticorrosive way.

Design Standard: API5L, (PSL1, PSL2); GB/T 9711.1;
Grade: Gr.B, X42, X46, X52, X60, X65, X70, X80, Q235B, GR.C
Size: OD: 219-2020mm
Length: 4/6/12/18/21 metres.



Prodotcs

F- Coating Pipe

F.3 - Coated Steel Pipe

Design Feature

- **Top quality:** Hydraulic test, X-ray, offer-Line UT, Eddy Current Inspection, etc, 3rd party inspection to test.
- **Applications of coated steel pipe:** coated steel pipe base metal is including spiral, straight seam pipe, seamless steel pipe, etc. which are widely used in pipeline projects in the field of petroleum, chemical, natural gas, heating, water, bridges, steel structures, ... etc

Types: Pipe corrosion types are divided into external corrosion and internal corrosion

Design Standard:

DIN 30670: Polyethylene coatings of steel pipes adn fittings.

DIN 30678: Polyethylene coatings of steel pipes and fittings.

SY/T0413-2002: Technical standard of polyethelene coating for buried steel pipeline



Prodotcs

G- Stainless Steel

G.1 - Stainless Steel Pipe

Design Feature

Design Standard: ASTM A312
Grade: 304/L and 316/L
Size: 1/4" Thru 36"
Schedules: 10s, 20, 40s, 80s



G- Stainless Steel

G.2 - Duplex Stainless-Steel Pipe

Design Feature

Design Standard: ASTM A789, ASTM A790, ASTM A213, A269, A312, A511, A789, A790, A376, EN 10216-5
Nominal Dia: 1/2" to 32" NB for seamless pipe.
Size Range for tubing: OD: 1/4" (6.25mm) to 8" (203mm), WT: 0.02" (0.5mm) to 0.5" (12mm)
Length: 5.8m, 6m, 11.8, 12m, 30, (max) or as your requirement.
Finish: Annealed & Pickled, bright annealing, polished.
Ends: Beveled or plain end, square cut, butt free, plastic cap at both end.



G- Stainless Steel

G.3 - Industrial Stainless Steel Pipe

Design Feature

- High Temperature resistance
- High nitrogen content
- **Applications:** Field of chemical industry, shipbuilding, electric power, construction, oil field, gas, sewage, mechanical equipment, aviation, submarine engineering, pharmaceutical, etc.

The function of the industrial stainless steel pipe:
304L Industrial stainless steel pipe: as low carbon steel 304, in general the corrosion resistance is similar to the 304, but after welding or eliminate stress, excellent anti intergranular corrosion ability, without heat treatment conditions, can maintain good corrosion resistance.



G- Stainless Steel

G.4 - Stainless Steel Pipe Fittings



Cap



Elbow



Flange



Tee

Products

Stationary LNG Storage Tanks



Specification

Capacity:	5m ³ to 500m ³
Medium:	LNG
Working pressure:	As required
Construction standard:	ASME, EN or Chinese standard
Insulation mode:	Vacuum power insulation
Type:	Vertical or horizontal

Products

Stationary LOX/ LIN/ LAR Storage Tanks



Specification

Capacity:	5m ³ to 500m ³
Medium:	Liquid oxygen, nitrogen, argon
Working pressure:	As required
Construction standard:	ASME, EN or Chinese standard
Insulation mode:	Vacuum power insulation
Type:	Vertical or horizontal



Products

Tube Industry

Overview

We offer Integrate steel tube & pipe industry solution, which helps customer to bring their projects to life.

- High performance and reliable equipment.
- Support from the minute the project begins to find the best solution for the customer's target requirement and great flexibility to meet customer specifications.
- A trusted partner throughout every stage of the project, from design to production, and during the life of the equipment after it goes on line.



25 Tube Mill line/pipe mill line

Overview

ERW25 Steel Pipe Mill description:

ERW25 tube mill / pipe mill / welded pipe production / pipe making machine is used to produce steel pipes of 8mm-25mm in OD and 0.3mm-1.2mm in wall thickness, as well as corresponding square and rectangular pipe.

Advantage

- High production efficiency, line speed can be up to 130m/min.
- High automation.
- High strength, the machine works stably at a high speed, which improves product quality.
- Low defect product rate.



Milling Saw

Overview

Product description:

The equipment cutting trace of this series is according to section shape of the steel tube, siemens motion control system process cutting. while the saw blade rotate around gear ring, and respectively adjust the feeding position at same time thus achieve profile milling.

Advantage

- **Cutting form:** adopt cold milling saw to cut tube, little heat produced in processing avoid the internal stress and material structure at the incision section.
- **Incision quality:** adopt optimized cut feed curve reasonable distribute cutting area, make the cutting incision free burr of the inner and outer tube, cut section mooth and clean.
- **Equipment wear and tear:** Low blade wastage, low cost.



Prodotcs

Slitting Line

Overview

Product description:

We provides customized slitting line solutions for all dimentions, from hot-rolled strip to thinnest cold-rolled strip, from aluminum to stainless steel, in strip width from 120 to 2500mm and strip thickness from 0.3 to 20.0 mm. Advanced and pioneering technologies are specially matched to the requirements of our customers.

Advantage

- High automation level to reduce non-productive times.
- High quality of the final product.
- high production capacity and flow rates by rigorous minimization of tooling time and high production speed.
- minimum power consumption by modern regenerative systems and using drives of special grades.



Prodotcs

Products

Turbine Parts

Overview

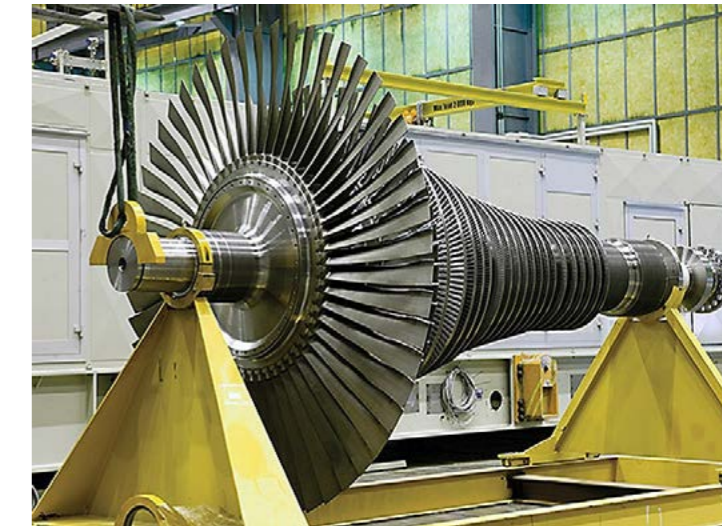
Units and details of the turbines flow section: Rotor blades HPC, MPC, IPC for steam turbines with different types of tailings, including:

- Shrouds of rotor and guide blades (profile and flat). Segments of fastening wire.
- Segments of solderless wire (damper). Blanks of rivets.
- Nozzle machines (wall- milled, typesetting, welded).
- Nozzle blades.
- Distributors
- Diaphragm clips.
- Welded diaphragms.
- Cast Diaphragms in weight up to 5000 kg.
- End seals.
- Cast and welded clips.
- Sealing rings.



STEAM TURBINES CATALOGUE

PT-80-130	PTR-80-130	K-80-7,0	K-660-247	K-500-240	K-500-166-1(2)
PT-65-130	PT-65-90	T-60-112	K-330-240	K-300-170	TK-330-240
R-25-8,8-1(2)	R-50-90(130)	R-85-8,8	K-300-170-1R	K-330-23,5-2R	K-255-162
K-55-90	K-55-60	T-50-8,8	K-225-12,8-3P(4R)	K-225-12,8	K-225-12,8-3
K-40-62	PT-30-8,8	PT-40/50-8,8	K-215-130-1(2)	K-210-130-8	K-200-181
PR-30-2,9	PTR-30-2,9	PT-30-3,4	T-185-12,8-1(2)	T-180-130-1(2)	T-185/210-16,0-R
PT-30-2,9	PT-35/55-3,2	T-30-2,9	K-165-130	T-150-7,7	K-160-7,5
T-25-3,4	P-30-2,9	—	K-110-6,5	T-140-145	T-130/160-12,8
			T-120/140-12,8	T-115-8,8	T-120-12,8
			KT-115-8,8-2	KT-120-8,8-2M	KT-120-12,8
			K-110-140	K-100-90	—



Products

Valves

Overview

We will work closely with you to define your valve needs and specify the product to meet those needs. Use the list below as a guide to some of the many factors you will need to consider in making an important valve or actuator purchase. Knowing these criteria will help the manufacturer or its distributor design and/or select the best valve for your particular application

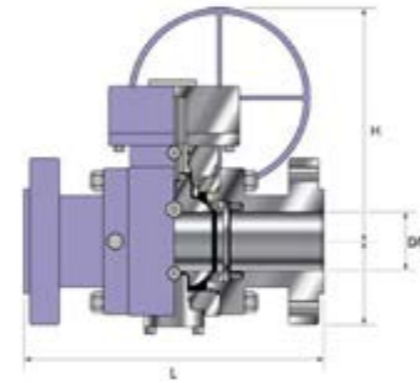
- Media being handled, e.g., liquid, gas, slurry, or solid.
- Corrosiveness of media, e.g., PH, concentration.
- Corrosiveness of atmosphere.
- Flow (velocity, capacity, direction).
- Pipe size.
- Media temperature (maximum to minimum).
- Pressure: maximum operating pressure; maximum differential pressure.
- Operation: e.g., manual/automatic, on-off throttling.
- Installation constraints.
- Envelope dimensions.
- Weight.
- Accessibility.
- Conformance to appropriate standards, e.g., API, AWWA, ANSI, FM, UL, OSHA, etc.
- Tightness of shutoff required.



Ball Valve

Design Feature

- **Optional DBB design:** Double block and bleed design.
- **Fire safe and anti-static design:** Metal to metal sealing shuts off valve flow when soft sealing materials are destroyed by fire.
- **Optional stem extension:** Extension stem can meet the customers' demand, to adapt to any condition.
- **Secure line flow locking device:** Valve is equipped with an integral locking device to secure line flow.
- **Anti blow-out stem design:** It has a taper on sealing surface, it can be replaced packing when the valve is open.
- **Optional operation:** Gear, electric or pneumatic actuator is available upon request.



Design Standard: API 6D, ASME 16.34, API 608
Body material: WCB, LCB, CF8, CF8M, CF3M etc. (A105, LF2, F304, F316, F316L etc.)
Ball material: 13Cr, SS304, SS316, SS316L etc.
Seat material: PTFE, RPTFE, PEEK, NYLON
 Class: 150LB to 2500LB
 Size: 2" to 48"
Connection: Flanged, welded
Material: Carbon & Stainless Steel



Gate Valve

Design Feature

- **Flexible wedge:** Flexible wedge to compensate for seat face distortion and body deformation due to pipe stress.
- **Optional stem extension:** Extension stem can meet the customers' demand, to adapt to any condition.
- **Optional threaded or welded seat:** we can also according to the customer demand surfacing with stellite 6.
- **Anti blow-out stem design:** It has a taper on sealing surface, when valve opens, it is closer to the valve cover seal seat.
- It can be interchanged the disc of gate valve under 8"



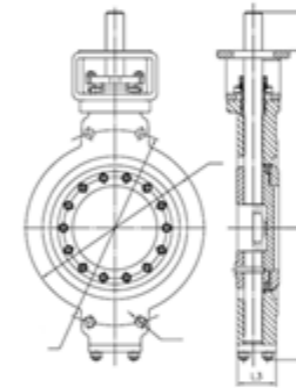
Design Standard: API 600, ASME B16.34
Body material: WCB, LCB, CF8, CF8M, CF3M etc.
Sealing face type: 13Cr/13Cr, 13Cr/STL, STL/STL, 304/304, 316/316, 316/STL etc.
Class: 150LB to 2500LB
Size: 1/2" to 48"
Connection: Flanged, welded
Material: Carbon & Stainless Steel



Butterfly Valve

Design Feature

- Anti-blowout stem for high dependability, **completely conforming to API 609.**
- Elastic property of composite metal sealing ring to perform zero leakage.
- The valve position indicator on the stem and the flange mounted at the top are in favor of the indication of disc position.
- The design of right-angled rotation with zero friction is implemented by the distinctive triple eccentric principle. It eliminates the friction



Design Standard: API 609, ASME B16.34
Body material: WCB, LCB, CF8, CF8M, CF3M etc.
Sealing face type: 13Cr/13Cr, 13Cr/STL, STL/STL, 304/304, 316/316, 316/STL, PTFE etc.
Class: 150LB to 600LB
Size: 2" to 60"
Connection: : Flanged, Wafer, Lug, Welded.
Material: Carbon & Stainless Steel between the seat and sealing ring in 90° rotation.



Safety shutdown valve or isolating valve

Design Feature

This valve is specifically suitable for severe duty on-off (upstream) and for quick-acting safety applications (HIPPS, ESD). Pressure has no impact on the operating forces, and the valve can be opened against full differential pressure.

Advantages

- Axial flow
- Low pressure loss
- Pressure balanced
- Easy actuation
- Excellent sealing
- Fire-safe



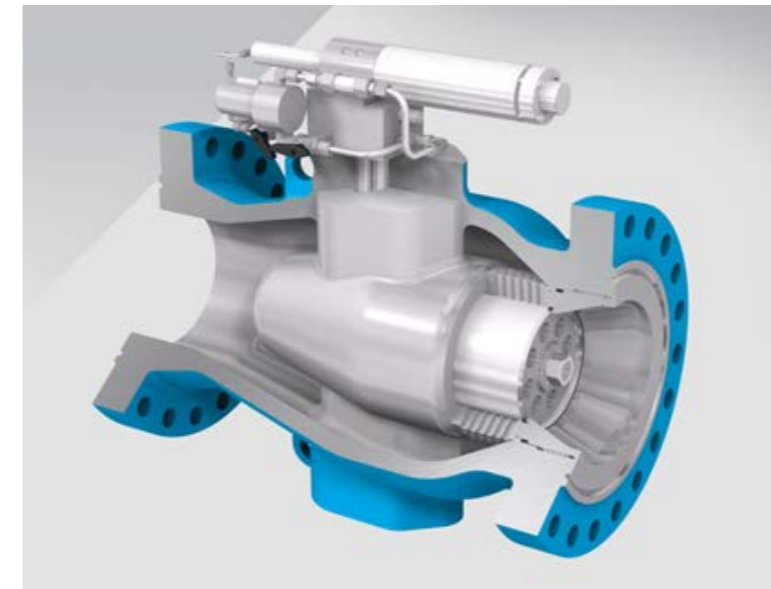
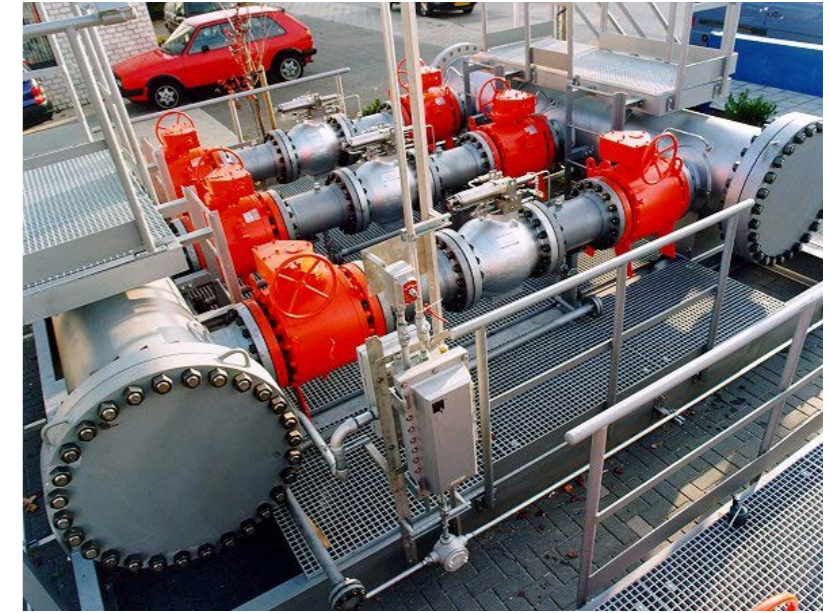
Surge relief valve

Design Feature

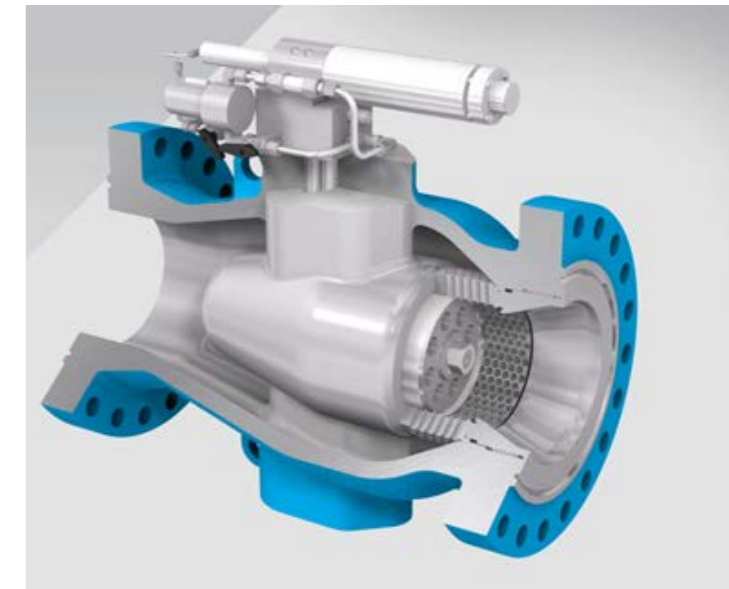
The high-capacity proportional pilot design allows fast response and will eliminate the dangers of a pressure surge. All components operate solely on fluid static pressure to provide ultimate protection.

Advantages

- Quick response
- High capacity
- Unique TVM
- No external energy
- Low maintenance
- High-performance
- Stable operation



Open Valve



Close Valve

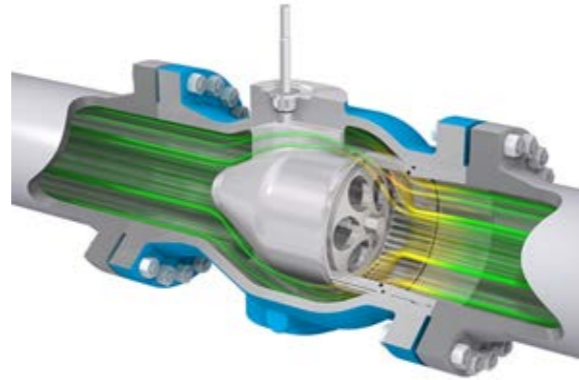
Axial control valve

Design Feature

Axial control valves with proven reliable performance will help to reduce costly maintenance and lost production time; a choice that will ensure the safe and reliable operation of your plant.

Advantages

- High capacity
- Accurate control
- High turndown
- Silent
- Compact
- Unique TVM



HIPPS (High Integrity Pressure Protection System)

HIPPS is applied to prevent over-pressurisation of a plant or pipeline by shutting off the source of the high pressure

Advantages

HIPPS provides a technically sound and economically attractive solutions to protect equipment in cases where:

- High pressures and / or flow rates are processed
- The environment is to be protected
- The economic viability of a development needs improvement
- The risk profile of the plant must be reduced

Features

- High reliability
- Fast acting
- High capacity
- Accuracy better than 1%
- No partial stroke testing required

Scope for High Integrity Pressure Protection System (HIPPS)

- Sizes: 2" - 48"
- Ratings: ASME 150 - 2500 or API 3000 - 10 000
- Higher pressure ratings upon request
- All: EN14382 certified (former DIN3381)
- Full closure in 2 seconds.



HIPPS Closing

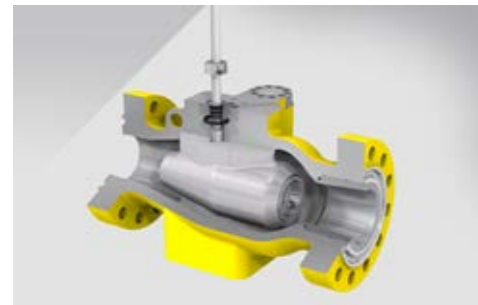


HIPPS Opening

Safety Subsea Products

1-Subsea High Integrity Pressure Protection System (HIPPS)

HIPPS is applied to prevent over-pressurisation of a plant or pipeline by shutting off the source of the high pressure. Subsea HIPPS valves or complete stand-alone subsea modules including initiators and logic solver. All deliveries include third party safety validation.



Close Valve



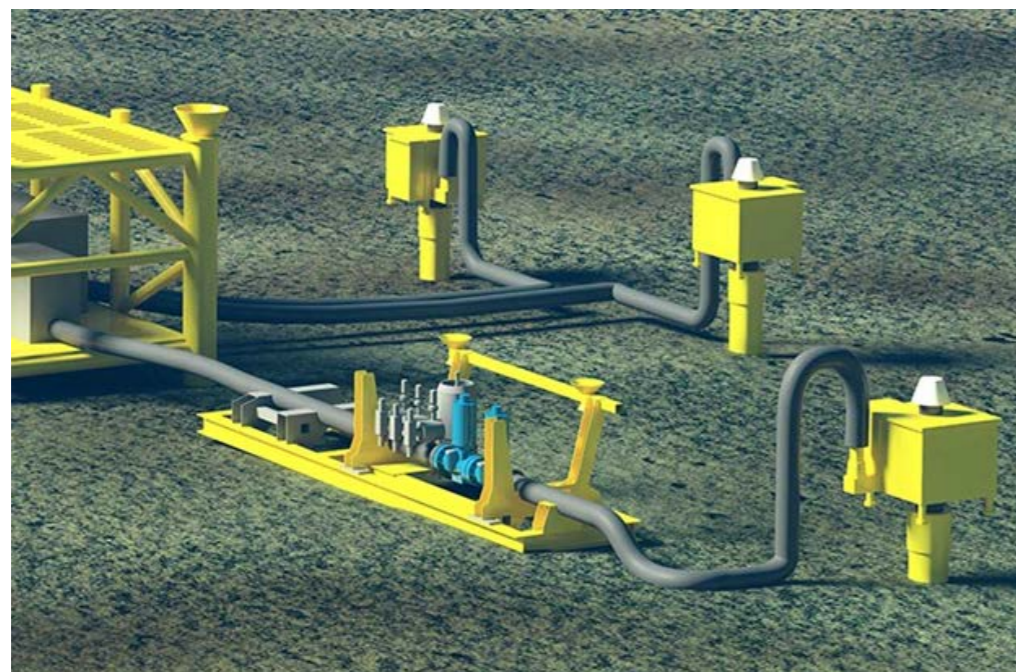
Open Valve

Typical applications

- Safety shut-down systems (SSD)
- Emergency shut-down systems (ESD)
- Safety Instrumented System (SIS)
- Safety Instrumented Function (SIF)
- Over-pressure protection systems



Streamlined flow path through full-port expanded body



2. Subsea shutdown valve or isolating valve

This subsea on-off valve is specifically suitable for severe duty on-off (upstream) and for quick-acting safety applications (HIPPS). Pressure has no impact on the operating forces and the valve can be opened against full differential pressure.



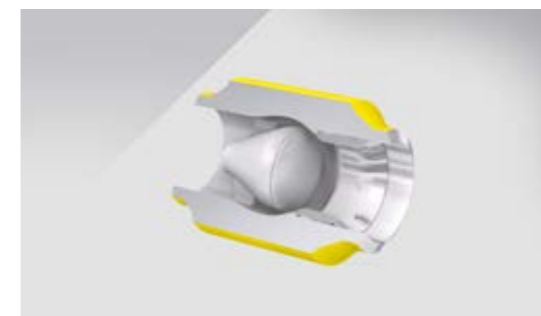
Close Valve



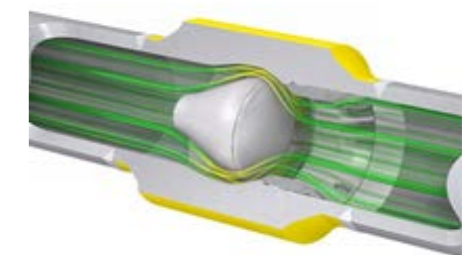
Open Valve

3. Subsea check or non-return valve

An axial check valve is the preferred solution for critical non-return applications such as the protection of rotating equipment and systems where low pressure loss, stable operation and dynamic behaviour are essential.

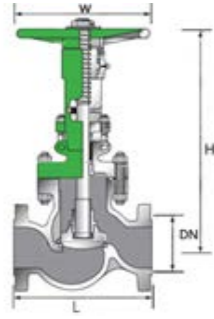


Close Valve



Open Valve

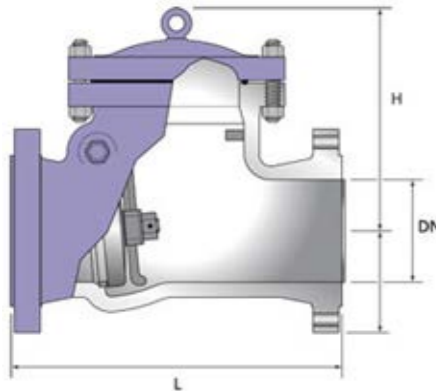
Globe Valve



Design Standard: BS 1873, ASME B16.34
Body material: WCB, LCB, CF8, CF8M, CF3M etc.
Sealing face type: 13Cr/13Cr, 13Cr/STL, STL/STL, 304/304, 316/316, 316/STL etc.
Class: 150LB to 1500LB
Size: 1/2" to 24"
Connection: Flanged, welded
Material: Carbon & Stainless Steel



Check Valve



Design Standard: BS 1868, ASME B16.34, API 6D
Body material: WCB, LCB, CF8, CF8M, CF3M etc.
Sealing face type: 13Cr/13Cr, 13Cr/STL, STL/STL, 304/304, 316/316, 316/STL etc.
Class: 150LB to 2500LB
Size: 1/2" to 48"
Connection: Flanged, welded
Material: Carbon & Stainless Steel



Control valve



Other



.C. Slab Gate Valve



18" Class API 10000
Inconel 625 Fully cladded
(33% H2S)
Time to close: less than 2 seconds

Top Entry Ball Valves



28" and 20"
Class API 900
Metal Seated,
Inconel 625 Fully cladded
(>25% H2S)

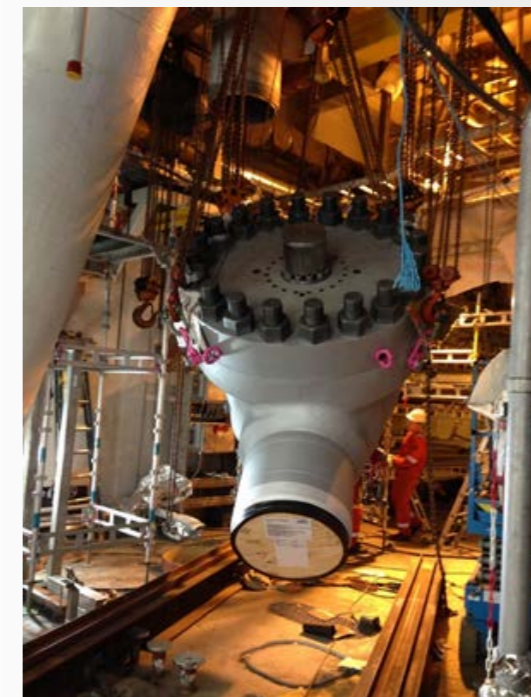
Productcs

Side Entry Ball Valves



24" x 20" Class 1500
(HIPPS Valves)

T.E. Ball Valve



30" ANSI 1500

Productcs

T.C. Double Expanding



Gate Valve 16" Class API 900

Axial Flow On/Off and Control Valve



Productcs

T.C. Double Expanding



Slab Gate Valve 42" ANSI600



Productcs

Products

Well Head Control Panel

Overview

PPS Provides customized Pneumatic and/or Hydraulic Packages for a wide range of process oil & gas applications. Wide range of Technical Features available for Customers.

Customization:

- Different types of installations: Cabinet, Shelter, Rack, Module (suitable for integrated Skid with WHC P, Chemical, RTU, UCP, PAGA, F&G/ESD, Solar power, etc in one single skid)
- For low pressure application or very high pressure applications. \
- For every extreme harsh environment temperature conditions down to -45°C and / or up to -85°C
- Wide array of applications:
 - > WHCP (single module or multiple drawers type)
 - > HPU
 - > Workover
- Different material types
- Accumulator detailed sizing: bladder type, piston type
- Oil Pump detailed sizing: piston pump electrical driven or pneumatic driven



Products

Electric Motors



Regal is one of the world's largest producers of electric motors with technology and manufacturing centers spanning the globe. Regal motor designs include HVAC, fractional, and integral and medium voltage AC and DC motors in IEC and NEMA enclosures. Innovative motors include axial and radial flux designs with integrated controls for optimum performance. Regal builds "Mission Critical" motors for many unique industry applications like HVAC, pumping, fans and blowers, compressors, and industrial machinery.

AC Drives and Controls



Regal is a leader in providing unique control solutions to a vast array of industries including oil and gas, automotive, food and beverage, and primary metals. Our products include IEC and NEMA motor controls, solid state low and medium voltage starters, low and medium voltage AC drives, and control solutions.

Bearings



Regal designs, manufactures, and sells mounted and unmounted bearings. Mounted bearings are available within a variety of options and sizes that include ball, spherical, and tapered rolling elements, and they're mounted in pillow block, flange, and cartridge style housings. Unmounted bearings are offered in a variety of types and styles. These include cam followers, radial bearings, thrust, rod ends, aerospace, and specialty bearings.

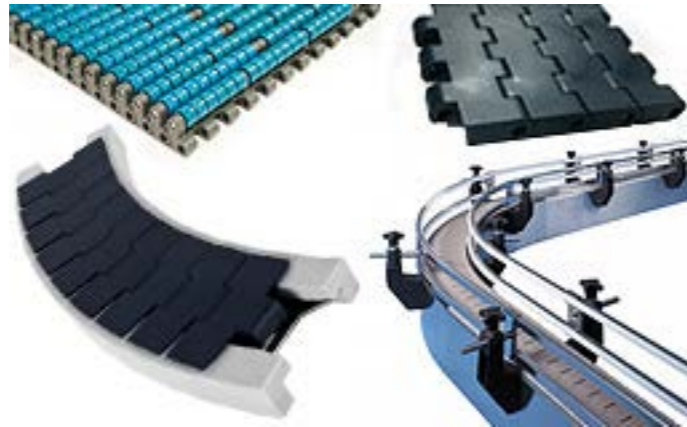
Blowers



Regal is a global innovator in high efficiency integrated blowers that are used in a wide range of applications in HVAC, white goods, water heating, small pumps, and compressors. Regal products include PMAC refrigeration motors, integrated blower/motors, fan/motor assemblies, and pre-mix blowers.

Products

Conveyor Technologies



Regal products keep the world moving! Conveyor technologies include chains and sprockets, modular plastic belts, mounted bearings, couplings, variable speed motors, gear motors, AC & DC drives, gear drives, and control solutions. With 75 years of industry focus, Regal has acquired the know-how and experience in material, bulk, and unit handling operations, which has led us to be one of the industry innovators in conveying solutions.

Couplings



Coupling products range from gear, grid, jaw, elastomer, disc, universal joints as well as almost every conceivable engineered or made-to-order coupling you require.

Electronic Components



Regal is an industry leader in NEMA terminal and fuse blocks, IEC terminal blocks, along with motor and lighting capacitors. OEMs prize the innovation, reliability, and quality of Regal® components.

Gearing



Regal designs, manufactures, and sells high efficiency gear drives for motion control within complex equipment and systems used for a variety of applications. We provide a variety of gear types, shaft configurations, ratios, housing materials, and mounting methods.

Products

Generators



Regal designs, manufactures, and sells electric generators from 5 kilowatts through 4 megawatts, manual and automatic transfer switches, power generation, distribution switchgear, components, and system controls. Marine, standby power, aerospace, and mining applications all use this product.

Mechanical Power Transmission Components



Regal offers an extensive product line of mechanical power transmission components ranging from clutches, torque overload devices, chains, sprockets, bushing and much more allowing us to help your power transmission needs from start to finish.

Switchgear and Controls



Regal's switchgear and control products are in high demand in data centers as well as power monitoring and control applications around the world which include distributed generation switchgear, emergency standby switchgear, prime power, arc resistant switchgear, and seismic switchgear. Products range from 240VAC to 13.8kV systems.



System 2000 Switchgear

Thomson designs, manufactures and services power generation switchgear for prime power, standby, distributed generation and cogeneration applications.



Transfer Switches

Thomson manufactures a complete lineup of transfer switches ranging from 100A to 4000A. Our innovative designs offer power solutions for mission critical, industrial, agricultural and residential applications.

Products

FENWALNET™ 6000

Overview

Fire Alarm/Suppression System Control Unit The FENWALNET 6000 Fire-Alarm / Suppression System

Control Unit is a compact control unit that provides one signaling line circuit, four notification-appliance circuits, two releasing circuits, and four on-board relays. Two of the four notification-appliance circuits are userconfigurable

to actuate one solenoid valve for control of a special-extinguishing system or a pre-action / deluge sprinkler system. A 5.4-A, filtered and regulated power supply provides charging capabilities for batteries up to 70 AH.



The FENWALNET 6000 Control Unit annunciates alarm, trouble, and supervisory events via an 80-character, backlit LCD display with integral status LEDs. Event acknowledgment, alarm silence, and system reset are accomplished with dedicated control keys. Basic user and maintenance operations such as viewing history or isolation commands to initiating points and system outputs are performed via the control keys and associated digit keys. A security password prevents unauthorized access to the system.

Features

- Distributed Intelligence to Sensor Level
- Fully-Digitized Communications Protocol
- Up to 255 Points without Device-Type Restrictions
- Triple-R Protection Against Inadvertent Extinguishing-System Activation
- Inherently Power Limited
- Peer-to-Peer Networking of up to 32 Control Units
- USB Communications Port
- Internet Accessible
- Simple Programming
- UL, CSFM, MEA Listed/FM Approved

Specifications

Primary AC Power:	120 Vac, 50/60 Hz, 3.2 A 220/240 Vac, 50/60 Hz, 1.6A
Power Output:	5.4 A @ 24 Vdc Filtered and Regulated Inherently Power Limited
Battery (Sealed, Lead-Acid Only):	70 AH Maximum Capacity Enclosure fits two 12 AH batteries
1 Signaling Line Circuit:	255 Devices Maximum, Style -4, -6, or -7 (with Isolator Modules)
2 Notification-Appliance Circuits:	Class-A, Style-Z or Class-B, Style-Y VDC, 1.5 A (maximum per circuit) Suitable for Synchronized Notification Appliances
2 RS-232 Serial Ports:	Bi-Directional 9600 Baud, 8 Data Bits, 1 Stop Bit, No Parity
1 RS-485 Communications Port:	Maximum 31 Remote Addresses (RDCM and ATM-L)
1 USB Device Port	USB Serial

Products

Chemical Injection Systems

Overview

PPS Provides customized Chemical Injection Systems for a wide range of process oil & gas applications. Wide range of Technical Features available for Customers.

Customization:

- Three different types: Single Skid, Module (suitable for FPSO applications) or wheeled (mobile type)
- For low pressure application or very high pressure applications (FPSO Subsea Injection)
- Metering / Dosing pumps API 675 compliant (with stroke regulation)
- Reciprocating pumps API 674 compliant (with or without VSD)
- Double diaphragm, piston, plunger type pumps
- Centrifugal Pump ISO 2858 compliant
- Single-Head with IRCD or Multi-Heads Pumps
- Different material types: AISI316L, Hastelloy, Inconel, Super Duplex, Titanium, etc



Products

Fuel Gas Skids

Overview

PPS supplies customized Fuel Gas Skids to treat natural gas for feeding electrical power generators.

Technical Features and Equipment:

- Gas flow rate: from 10 Sm³/h up to 190.000 Sm³/h and over
- Gas Scrubber
- Coalescing filters
- Electrical heater with relevant Control Panel
- Metering and pressure reducers
- Supervisory control based on PLC
- Valves, piping, instrumentation and accessories fully according to Client requirements and codes.



Products

Sampling System

Overview

PPS Supplies customized Automatic Gas Sampling Systems, standalone type, suitable for offshore applications and for harsh environmental conditions. Such Sampling Systems are used to extract samples at high pressure and temperature and collect them inside removable cylinders suitable for laboratory analysis.

Technical Features and Equipment:

- Sampling Systems Cabinets, thermal insulated, in AISI 316 material (1.5 mm thick.)
- Valves, tubing and fittings in Inconel 625 material, suitable for 10,000/15,000 PSI pressure range
- High pressure actuated inlet and outlet valves for leakage test (Inconel 625 material)
- Sample Cylinder with quick coupling connections, in Inconel 625 material (11 volume)
- PT and TT transmitters with seal separator and isolation manifold (NACE certified)
- MUD/trap KO drum, designed to remove the mud (if any) from the inlet gas sample:
 - > Design pressure: 10,000/15,000 PSI
 - > Design temperature: -36/+75°C
- SIL-Certified safety system, fully interfaced with the existing ICSS/DCS and with the following key benefits:
 - > High safety integrity
 - > High availability
 - > Low maintenance costs.



Products

Analysis System

Overview

PPS supplies a complete array of customized Analyzers.

Types of Analyzers

- Gas Chromatographs
- Sulfur Analyzers
- H₂S Analyzers
- Moisture Analyzers
- Oxygen Analyzers
- Dystillation Analyzers
- Oil in Water Analyzers
- Liquid Analyzers (ammonia, chlorine)
- CEMS Analyzers

Technical Features and Equipment:

- Installation: rack mounted, cabinet and / or shelterized with forced ventilation HVAC, F&G, Extinguishing system.
- Fire resistant blast-proof certified by third party authority
- Sampling & Pre-Conditioning detailed engineering
- Different Material from AISI316L SS to Exotic Alloy
- Atex certified suitable for Hazardous area installation



Products

Air Preheater

Overview

Air preheater is a kind of preheating equipment to improve the heat exchange performance of boiler and reduce heat loss. The function of air preheater is to transfer the heat from the flue gas discharged from the tail flue of the boiler to the air before entering the boiler through the radiator, and preheat the air to a certain temperature, so as to improve the thermal efficiency of the boiler system.

Air preheaters are mostly used in coal-fired utility boilers. It can be divided into tube box type and rotary type. The rotary type can be divided into wind hood rotary type and heating surface rotary type. The rotary preheater with heating surface is often used in power plant boilers. Generally, the application in boilers is two-compartment, three-compartment and four-compartment, among which the four-compartment is more commonly used in circulating fluidized bed boilers.



Working Principle

Taking rotary air preheater as an example, the principle of air preheater is explained. When working, the air preheater rotates slowly. The smoke will enter the smoke side of the air preheater and then be discharged. The heat carried in the flue gas will be absorbed by the radiator in the air preheater, then the air preheater rotates slowly, the radiator moves to the air side, and then transfers the heat to the air before entering the boiler.

Boiler Air Fan

Fan structure

The main structure of boiler centrifugal fan is as follows:

- **Impeller:** Produce pressure, transfer energy.
- **Shell:** Collect the gas from the impeller and lead it to the outlet, which converts part of
- **Large Shaft:** Transfer Torque
- **Bearing:** Bearing the radial and axial load of the rotor, restricting the radial and axial position of the rotor.
- **Back wheel:** Connecting motor, transferring shaft power.
- **Bearing box:** Install bearing, fill lubricant.
- the kinetic energy of the airflow into pressure energy.
- **Collector:** In the case of minimum loss, the impeller inlet section is filled with uniform air flow.

Noise control technology

The noise of blower and induced draft fan in boiler room is generally about 90 decibels. Because the flue gas temperature of the conveying boiler is as high as 180 C, the use of enclosed sound insulation will lead to poor heat dissipation, motor temperature is too high, and even burn down the motor. Therefore, the noise reduction and energy saving of the fan are combined in the process.

Practice shows that the comprehensive treatment scheme for energy saving and noise reduction of boiler fans is to keep the technological arrangement of the boiler room unchanged,



place the blower and induced draft fan in the sound insulation room respectively, connect them with the main engine by the ventilation pipe, open air intake on the top or wall of the sound insulation room, and install mufflers for the use of the air intake of the engine room. In the plane arrangement, the blower is close to the side of the boiler room, the air inlet is on the upper side, and the motor is placed in the middle of the air passage.

Products

Sponge Iron Deaerator

Overview

Sponge iron deaerator is a kind of deaeration device. Water containing oxygen enters the deaerator and passes through the filter material layer of sponge iron. Because of the huge specific surface area of this special sponge iron filter material, the dissolved oxygen in water can be thoroughly oxidized with iron, thus removing the oxygen from the water.

Working Principle

Sponge iron deaerator is chemical deaeration, which uses specially produced active sponge iron to remove dissolved oxygen in water. The main component of sponge iron is porous internal structure. Under the same mass, its surface area is 50,000-100,000 times that of ordinary iron chips. It can react with oxygen in water rapidly and thoroughly and stabilize dissolved oxygen below 0.05 mg/L. The reaction formula is as follows:
 $2\text{Fe}^{2+} + 2\text{H}_2\text{O} + \text{O}_2 \gg 2\text{Fe}(\text{OH})_2$
 $4\text{Fe}(\text{OH})_2 + 2\text{H}_2\text{O} + \text{O}_2 \gg 4\text{Fe}(\text{OH})_3$



Reaction products $\text{Fe}(\text{OH})_2$ and $\text{Fe}(\text{OH})_3$ are flocculent precipitates which are not easy to dissolve in water. When the water passes through other sponge iron particles, they are intercepted. Only a certain strength of backwashing water can be used to wash them out.

Burner

Overview

Burner is a device that makes fuel and air emit mixed combustion in a certain way. Burners can be divided into industrial burners, burners, civil burners and special burners according to their types and application fields. It is made of corrosion resistant and high temperature resistant materials such as stainless steel or metal titanium. The function of burner is to atomize the sample by flame combustion. The atomized test liquid enters the burner. Under

the action of flame temperature and flame atmosphere, a large number of ground state atoms, as well as some excited state atoms, ions and molecules are produced through drying, melting, evaporation and dissociation. A well-designed burner should have high atomization efficiency, low noise and flame stability to ensure high absorption sensitivity



and measurement precision. Atomic vapor is produced by slot burner in atomic absorption spectrometry. According to the different types of gas and fuel gas used, the length and width of the burner gap are different. Generally, the suitable fuel gas and fuel gas are marked on the burner.

Products

Periodic/Continuous Blowdown Expansion Container

Overview

The periodic/continuous blowdown expansion container is connected with the periodic/continuous blowdown outlet of the boiler. It is used to decompress and expand the periodic/continuous blowdown of the boiler, so that the the blowdown water in the periodic/continuous blowdown container can be separated into secondary steam and waste hot



water. The waste hot water is discharged after expansion, pressure reduction and heat exchange in the expanded container, and the secondary steam is drawn out by a special pipe. Periodic/Continuous sewage discharge can be adjusted automatically with the change of boiler feed water load to maintain a relatively stable sewage discharge rate.



Products

Fuel Economizer for Gas/Oil Boiler (ordinary/high pressure)

Overview

The economizer is a device installed in the tail chimney of the boiler to recover the waste heat of the exhaust gas, which can heat the boiler feed water. Because it absorbs the heat of high temperature flue gas, reduces the exhaust flue gas temperature, saves energy and improves efficiency, so it is called economizer. The economizer can be used in all kinds of boilers.





Contacting Information

Contact us for more information or to discuss your needs of valves, pipes, fittings and/or flanges, or to enquiry our engineering consultant, commissioning services, training courses, seminars and customized in-house training services.

PREMIER PETROLEUM SUPPLIER.

Port Said Office: 7 Government Employees Building, Office No. 04, Port Fouad - 42523, Port Said, Egypt.

Cairo Office: 118 Marwa Building, Office No. 21, Al Fustat City, Old Egypt - 17611, Cairo, Egypt

Mail: Box number: P.O. Box: 1339, Nine Street, El Maadi - 11728, Cairo, Egypt.

Phone | +202-21076727

Fax | +202-21076679

Email: info@premps.com

www.premps.com